

# Seminar Booking Form

Seminar Fee: €40 (includes tea/coffee)

Return booking form for OFFALY seminar to:

Irish Georgian Society  
74 Merrion Square  
Dublin 2  
Tel: 01-6767053  
Fax: 01-6620290  
Email: info@igs.ie

All cheques payable to: Irish Georgian Society

Name:

Address:

Tel No.

Email:

No. of Places Required (at a cost of €40 per place):

Cheque Amount:

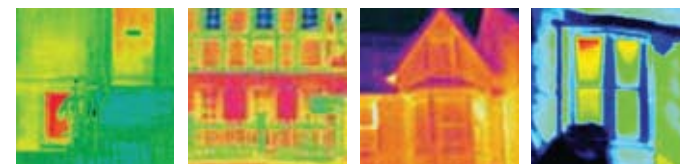
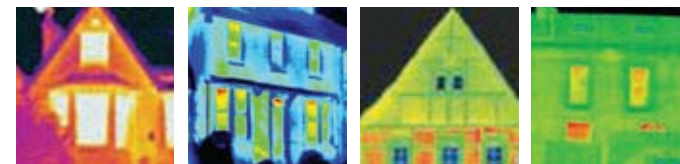
Visa Card/Mastercard No:

--	--	--	--	--	--	--	--	--	--	--	--	--	--	--	--	--	--	--	--

Name on Card:

Expiry Date:   /

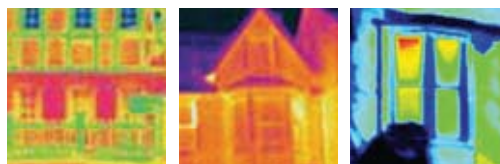
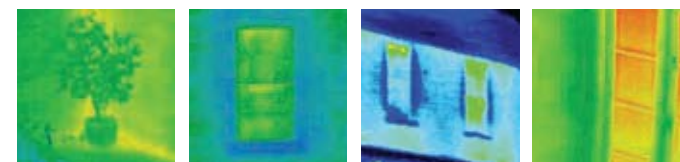
Security Code:    (last 3 digits on reverse of card)



The Irish Georgian Society is committed to informing owners and guardians of Ireland's built heritage of the need to balance energy conservation and building conservation. This Offaly seminar forms part of a series of regional *Energy Efficiency in Historic Houses* seminars, which the Irish Georgian Society is holding throughout the country. The seminars are held in partnership with local authority conservation officers and heritage officers.

The seminars have been made possible through support from the Electricity Supply Board (ESB) and the Department of Environment, Heritage and Local Government's Environment Fund.

## Energy Efficiency in Historic Houses Seminar



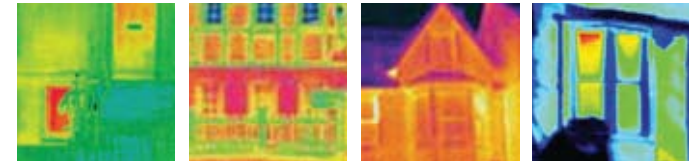
A half-day seminar to be held in  
The County Arms Hotel, Birr,  
County Offaly on  
Wednesday 25th November 2009

Presented by  
Irish Georgian Society & Offaly County Council



# Seminar Timetable

## Wednesday 25th Nov 2009



1.00pm Registration at The County Arms Hotel, Birr, Co. Offaly

1.30pm **Emmeline Henderson**, Conservation Manager & Assistant Director, Irish Georgian Society, Welcome

1.35pm **Rachel McKenna**, Senior Executive Architect, Offaly County Council, *Energy Performance in Protected Structures; planning implications and grants*

2.00pm **Paul Arnold**, Principal, Paul Arnold Architects, *Improving Thermal Efficiency: advice for owners of traditional buildings*

2.30pm **Katriona Byrne**, Conservation Officer, Roscommon County Council, *Studies in the Application of Building Energy Rating to Historic Building*

3.00pm Tea & Coffee

3.30pm **Edith Blennerhassett**, Office Director, Buro Happold Dublin, *Building Services Implications in Historic Houses*

4.00pm **Peter Smith**, Technical Advisor, Ecological Building Systems, *The Use of Appropriate Materials in Maximising Energy Efficiency and Moisture Control in Historic Houses*

4.30pm Q&As

5.00pm Close & Thank You

The seminar will provide practical, appropriate and easy to understand advice and guidance on how to thermally upgrade historic houses and reduce energy costs whilst ensuring that no damage occurs to their historic fabric and character. Crucially, attendance will equip the homeowner with the knowledge of how to obtain the most return for the least cost by doing 'as much as necessary and as little as possible' to ensure a comfortable and sustainable home to live in.

The intended audience is the owner of protected structures and buildings located within architectural conservation areas, as well as owners of any traditionally built historic house.

The seminar will also be of interest to architects and attendance at the seminar is recognised by the RIAI as a 'Structured CPD Activity' (2.5 CPD points)

## Abstracts & Biographies of Speakers

### PAUL ARNOLD

**Paul Arnold, B.Arch, FRIAI, RIBA**, is the principal of Paul Arnold Architects, which is a Grade I RIAI Conservation Accredited practice that is currently writing the DoEHLG's Advice Notes on improving thermal efficiency in traditionally built buildings.

**Abstract: Improving Thermal Efficiency: advice for owners of traditional buildings.** Traditional buildings have thermal performance characteristics arising from their design and construction which, if properly understood, can be employed to advantage. Failure to appreciate how buildings and materials behave can result in inappropriate application of technologies developed for modern construction. Issues of use and realistic expectation must also be addressed.

### EDITH BLENNERHASSETT

**Edith Blennerhassett, BE, CEng, MUBC, MCISSE, MIEI**, is a Director of Buro Happold's Dublin Office where in the capacity of services engineer she has worked on a series of sustainable and historic buildings.

**Abstract: Building Services Implications - Lean, Mean & Green.**

There are a number of ways of improving the energy efficiency and thus running costs of an historic building. Many of these are achieved simply by using more efficient modern equipment (boilers, kitchen appliances, light bulbs etc) with good controls (time clocks, thermostats and zoning). Going beyond this it is possible to consider

'green' or 'sustainable' systems (with potential for grant funding) such as solar panels which generate hot water or electricity from the sun or wood fired boilers etc. Edith will give an overview of the options and opportunities to reduce your carbon footprint whilst keeping the built heritage intact.

### KATRIONA BYRNE

**Katriona Byrne, MA, MUBC, Arc Dip Rec** has worked for the conservation departments of Dublin City Council, Cork City Council and since 2007, Roscommon County Council.

**Abstract: Studies in the Application of Building Energy Rating to Historic Building.** This paper outlines recent Heritage Council funded research in applying DEAP, the national system of assigning a Building Energy Rating to a building, to some historic buildings in County Roscommon. Although Protected Structures are exempt from compliance with Part L of the Building Regulations many owners and occupiers wish to improve the energy efficiency of their buildings. These studies examine how historic buildings perform in DEAP and are an attempt to propose ways in which changes can be introduced to both improve the rating and protect the building and its character at the same time.

### RACHEL MCKENNA

**Rachel McKenna, B. Arch., MRIAI, Grade III RIAI Conservation Accredited Architect**, Senior Executive Architect, Offaly County Council. Rachel is a graduate of UCD's School of Architecture, where she later lectured. She has worked on the Dublin Environmental Inventory, and the inventories of Temple Bar, Smithfield and the Dublin Docklands. Starting with Kildare County Council in 1996, Rachel has worked for Offaly County Council since 2007, where she is involved with the Housing and Planning Departments, as well as the implementation of Part IV (Architectural Heritage) of the *Planning & Development Act, 2000*.

**Abstract: Energy Performance in Protected Structures; planning implications and grant aid.** Planning implications of carrying out works to increase energy performance of protected structures and the requirements to respect the character of a protected structure when carrying out works. Availability of grants to assist in carrying out conservation works and thermal upgrading works.

### PETER SMITH

**Peter Smith, Technical Advisor, Ecological Building Systems** has many years experience as a project manager on new build and conservation projects, to include Ardraccon House, Meath & Luttrellstown Castle, Dublin.

**Abstract: The Use of Appropriate Materials in Maximising Energy Efficiency and Moisture Control in Historic Buildings.** This paper deals with the theme of the use of appropriate materials in maximising energy efficiency and moisture control in historic buildings from a building contractor's perspective. It will examine the following: breathable and natural insulations; draught proofing; intelligent moisture management; and dealing with damp internal walls.