

BANAGHER FORMER THATCHED HOUSE



Creative Ireland

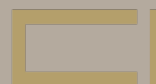
Vernacular Funding 2022

Offaly County Council – Rachel Mc Kenna SEA



Comhairle Chontae Uíbh Fhailí
Offaly County Council

Clár Éire Ildánach
Creative Ireland
Programme
2017–2022

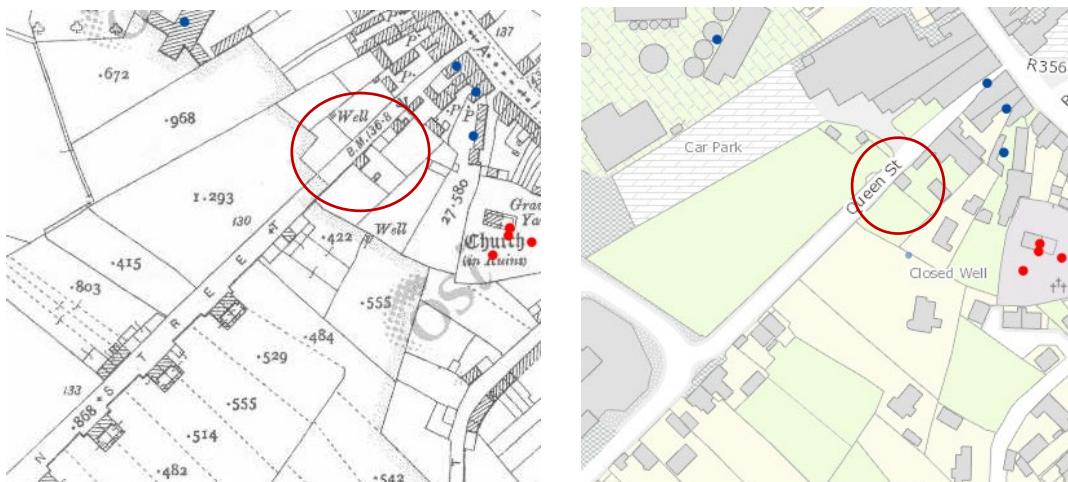


BANAGHER

POSSIBLE, 1628 PLANTATION WORKERS' COTTAGE



Above: Logan c1828 map and OSI 6" c.1838 showing the full terrace on former Puckagh Row. Below: OSI 25" c1910 map and current OS showing single remaining dwelling.



A possible surviving example of a seventeenth-century workers' cottage, can be found on the south aspect of Queen Street (Puckagh Row) approximately 80m from Main Street. It is consistent with the Logan map c.1828, First and Second Edition OS maps and is situated very close to the roadside. It is a modest single storey structure of random rubble, with traditional half door, and two window openings. It stands alone today, however the rubble stonewall of the front elevation is jagged in profile, suggesting it was formerly part of a terrace. The gable wall is of rubble stone to the eaves level, and has been built up in concrete blockwork to enclose the attic gable. The pitched roof is of modern concrete tiles, which replaced traditional thatch.



- Spectacular, intact interior well-cared for by the owners and extended family
- Liam Moran, owner photograph showing the property thatched and timber sliding sash windows 2/2 pane
- Property in 2020 with replacement casement windows to front and rear and rear door in poor condition



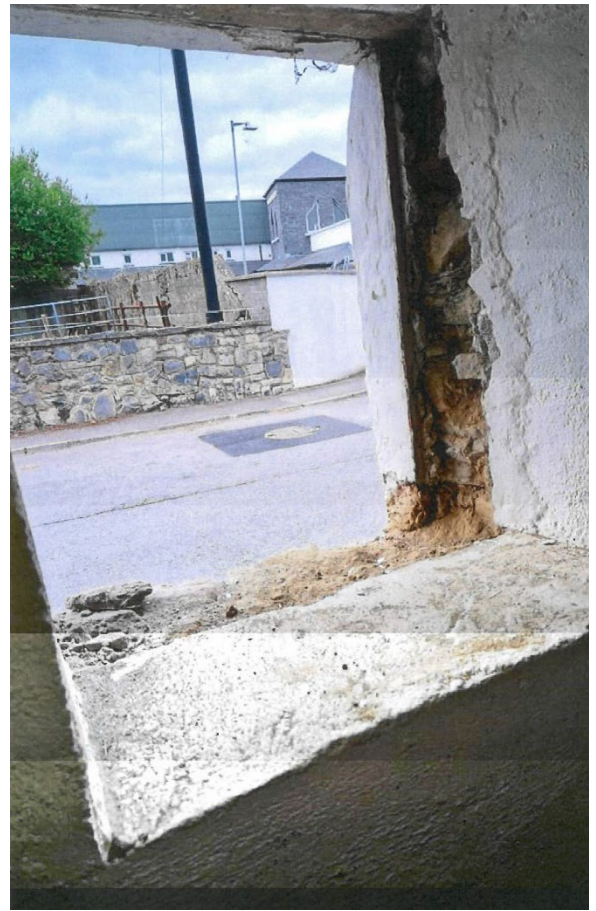


- The two-room dwelling has two windows to the front and one to the rear, with light modern rear door in poor condition.



Timber sash windows and frames under construction in workshop





Existing casement windows removed and new timbers sash windows inserted





Rear door in place, lime repairs to windows surrounds (no sills)



Rear elevation window and door – Before and After



