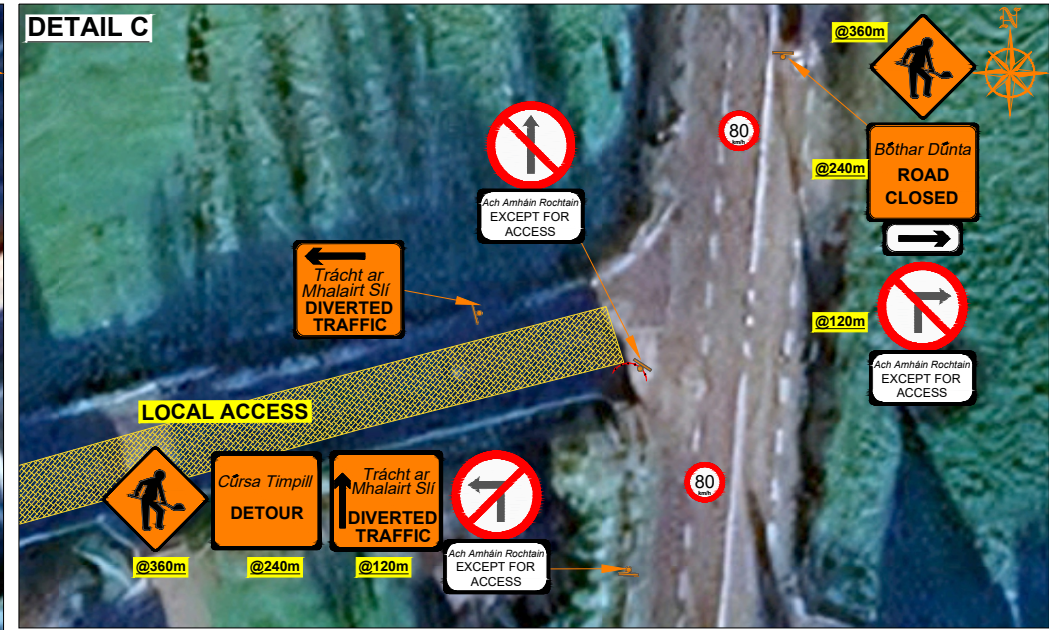
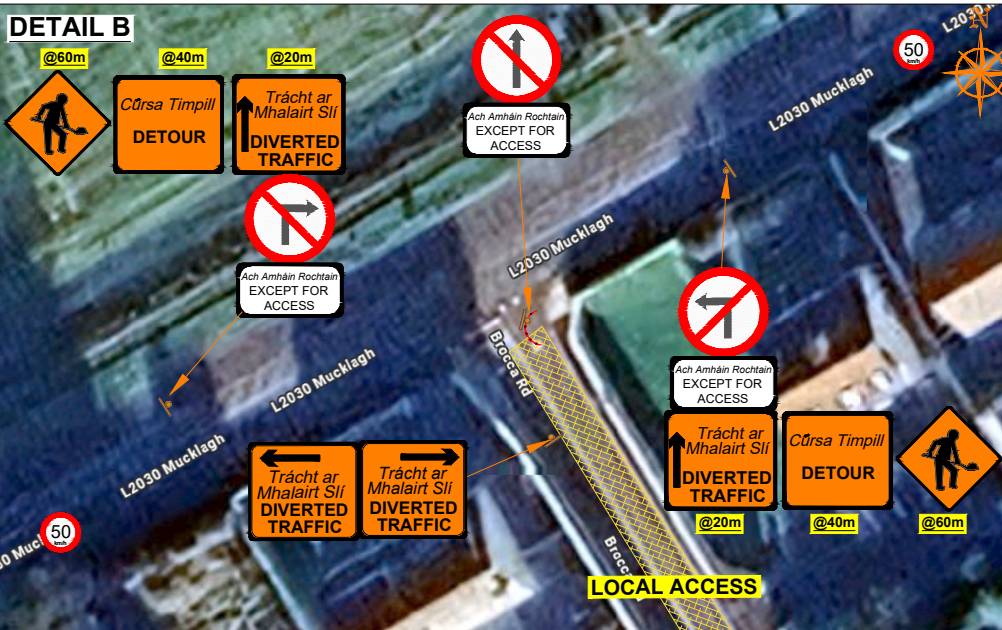
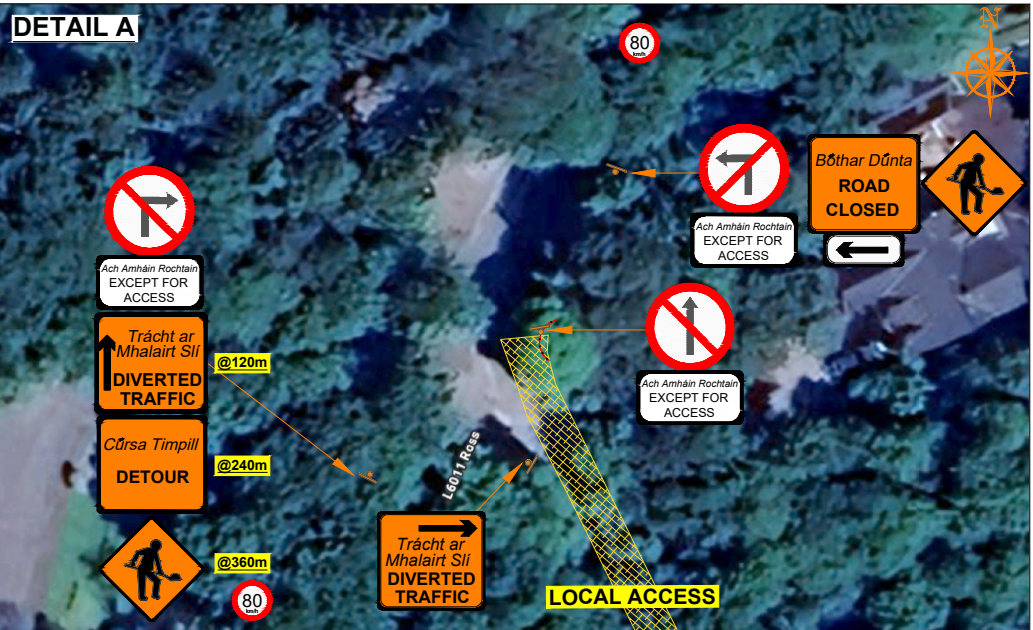
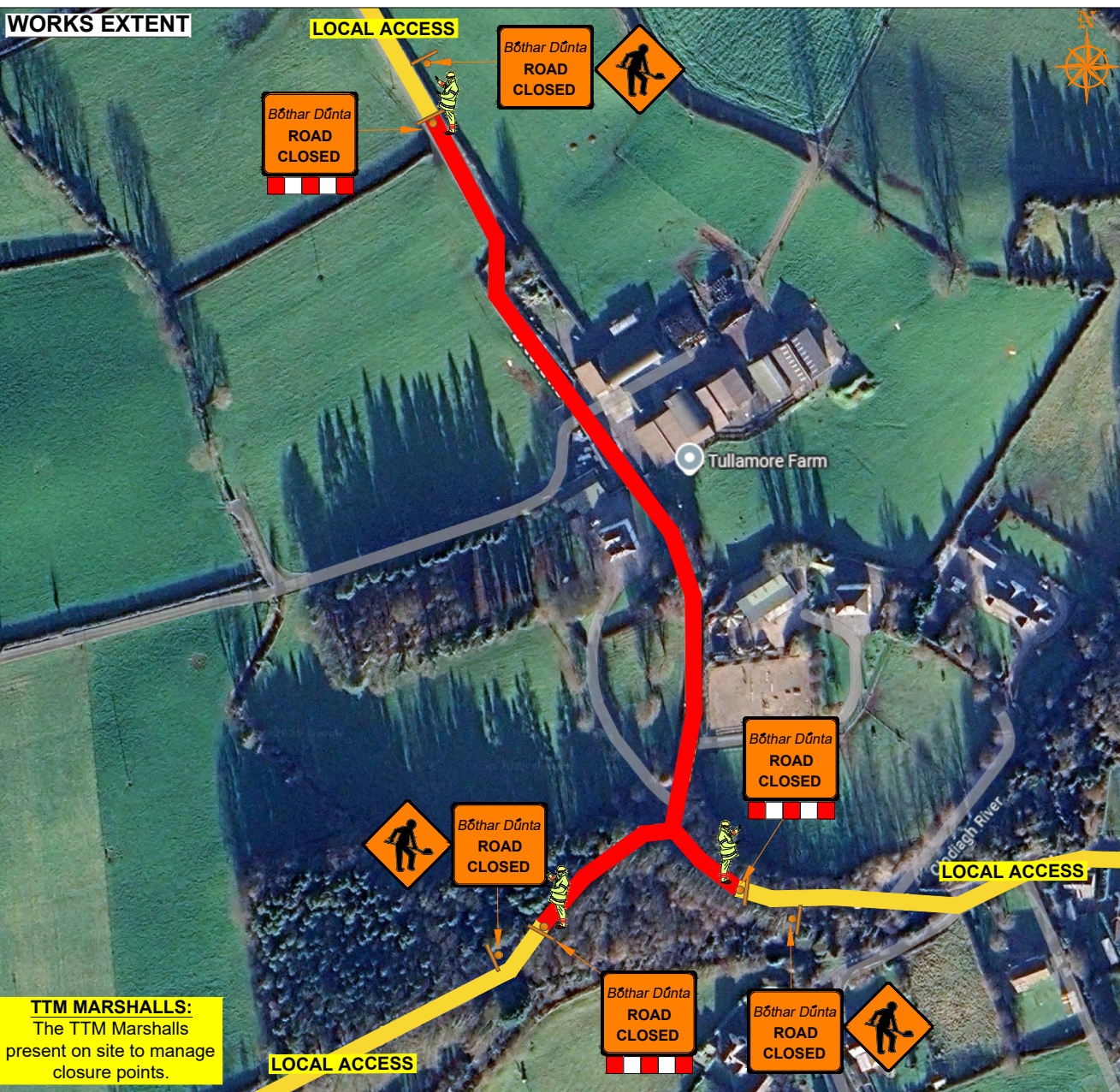
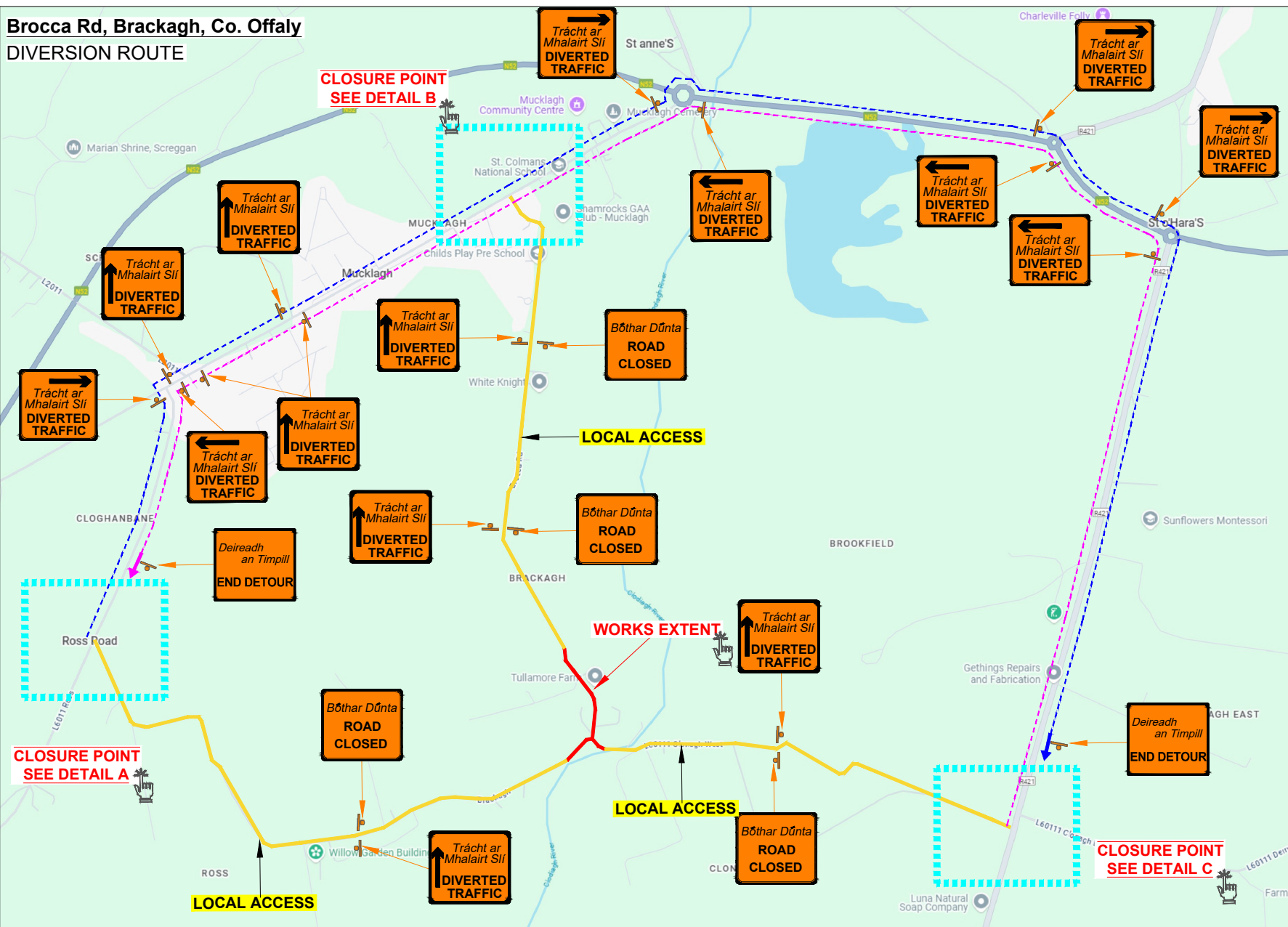


Brocca Rd, Brackagh, Co. Offaly
DIVERSION ROUTE



ROAD CONTROL

Copyright Notes:
This drawing is the property of Road Control Services Ltd. The design information contained herein is strictly confidential. This document is not to be used, reproduced, disclosed or circulated in whole or in part without prior written consent.

CLIENT

Kilsaran
ideas taking shape

DESIGN PARAMETERS	
Advance Warning Signage	
Sign size	600mm
Sign Visibility	60m
Number of Signs	3
Cumulative Distance	60m
Distance between Advance Warning Signs	20m
Taper	
Lane Taper Rate	N/A
Hard Shoulder Taper Rate	N/A

Speed Limit	
Speed Limit	60

Road Classification	
Road Classification	1(iv) Type A >12hours

LEGEND

- Works Area
- Traffic sign
- Traffic cones
- Diversion Route A
- Diversion Route B
- Local Access

GENERAL NOTES

- All information contained in this drawing (including digital data) should be checked and verified prior to any stage of construction;
- All works are to be carried out in accordance with local authority requirements and are to be included in the site-specific safety & health plan;
- Site inspections and maintenance of the traffic management layout is to be agreed with local authority to ensure the safety and integrity of the design;
- Contractor to carry out a site risk assessment prior to the installation of any traffic management plan to ensure that conditions reflect those considered for design post submission;
- Contractor shall be responsible for the provision of ramp access at any change in road surface level where traffic runs on a temporary surface, and for pedestrian/cycle ramps where footpath/cycle-ways have a level discontinuity as per result of the works.

Rev	Date	Details	Dm	Chk	App	Dm	DJ
						Chk	SD
						App	DH
						Date	23-05-2025
						Scale	NTS @A3
						Stage	CONSTRUCTION

Project	Title	Drawing No	Rev
Brocca Rd, Brackagh, Co. Offaly	TEMPORARY TRAFFIC MANAGEMENT PLAN DIVERSION ROUTE	C25002_15_001	0