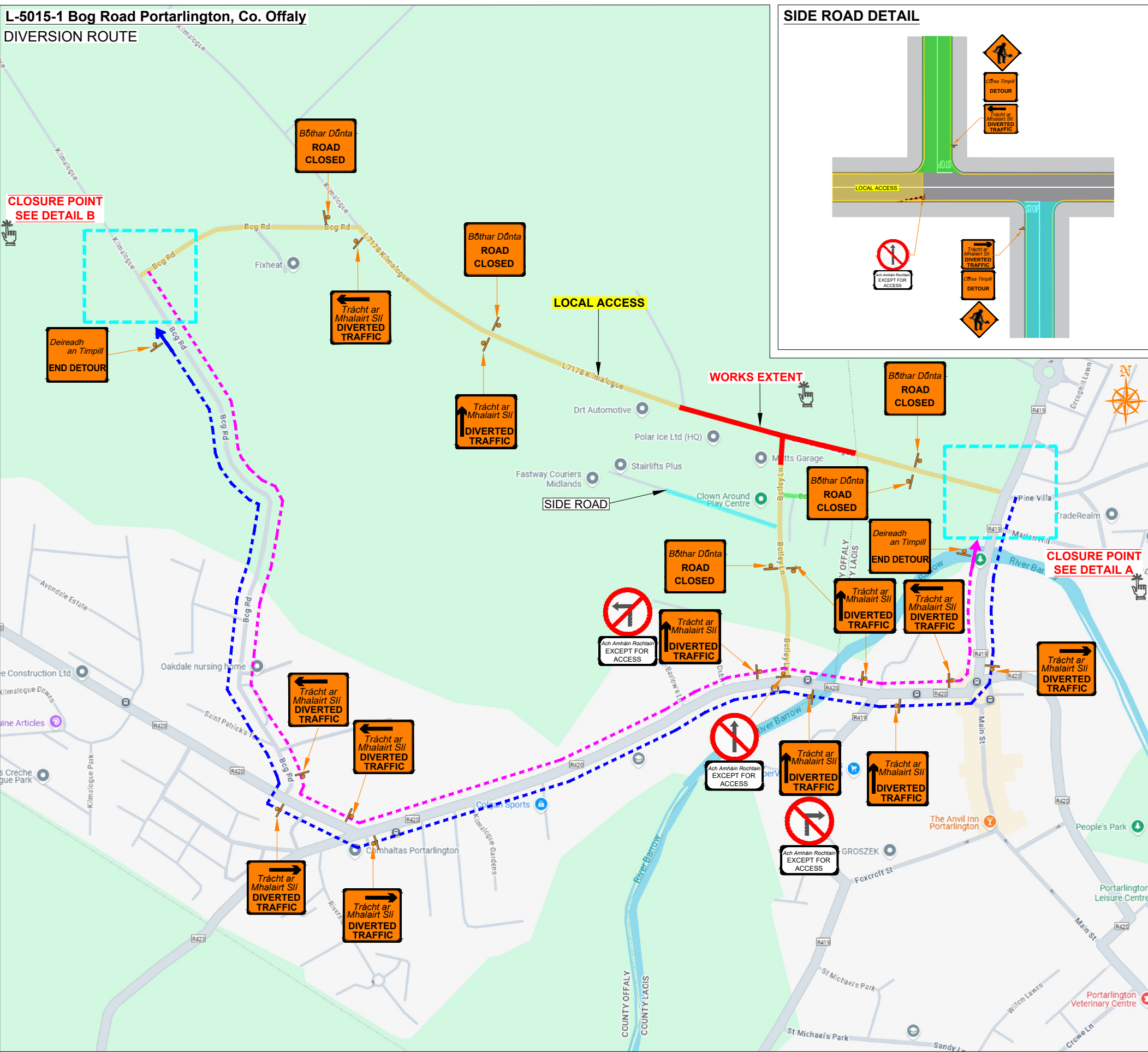
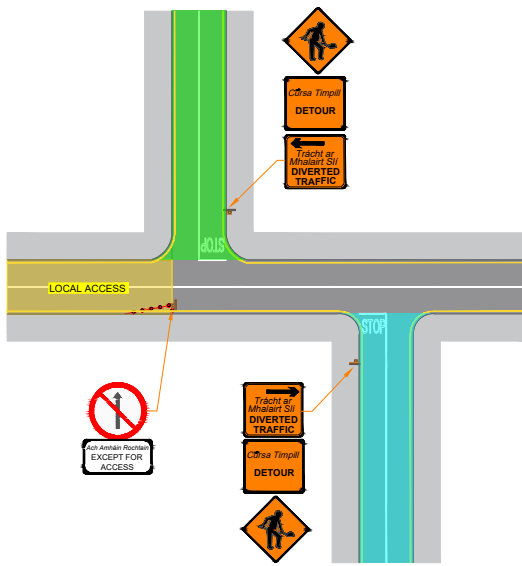


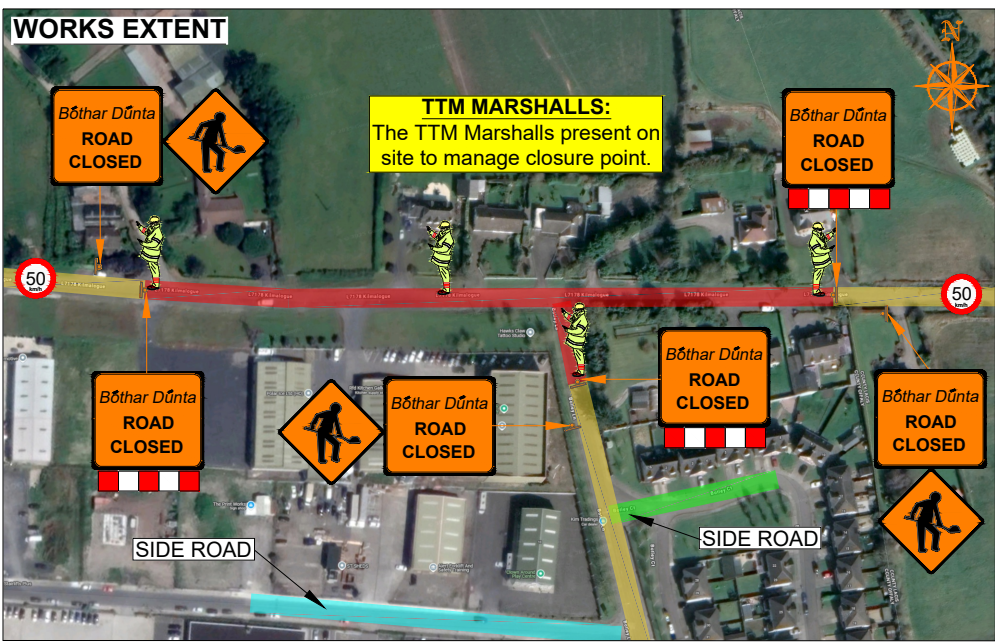
L-5015-1 Bog Road Portarlinton, Co. Offaly
DIVERSION ROUTE



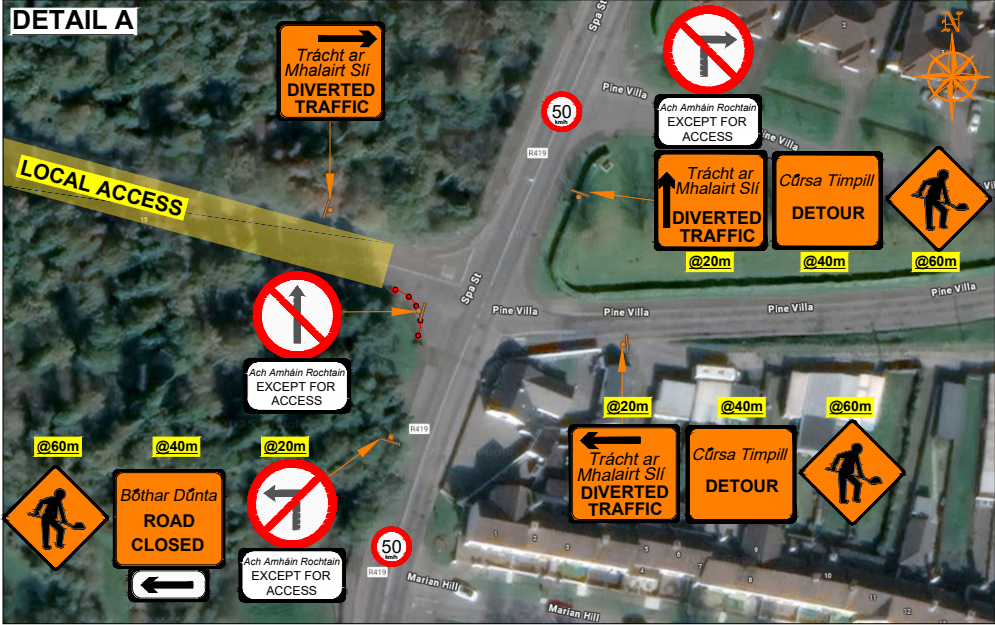
SIDE ROAD DETAIL



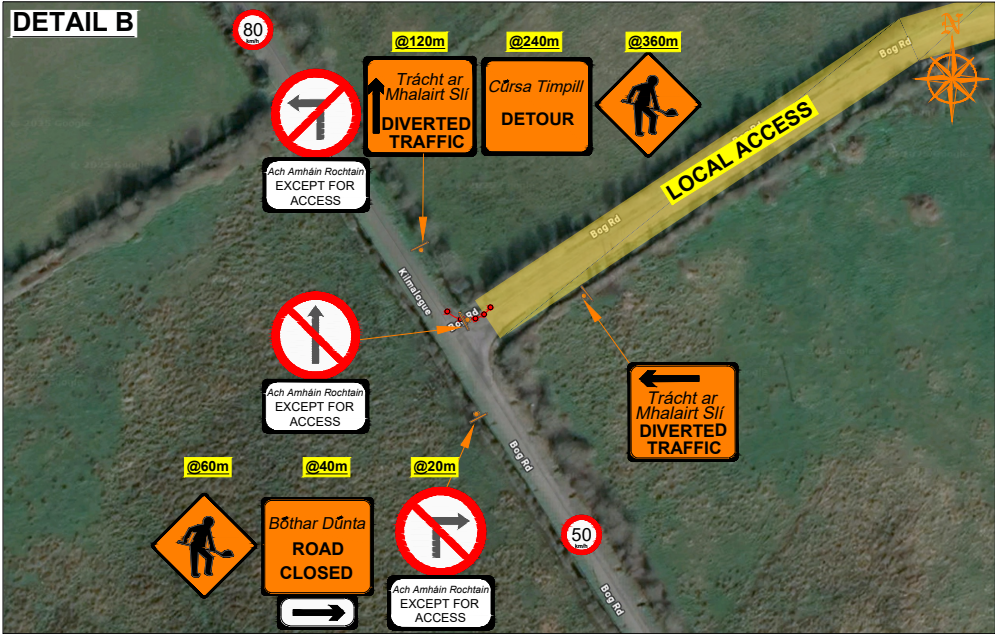
WORKS EXTENT



DETAIL A



DETAIL B




ROAD CONTROL

Copyright Notes:
This drawing is the property of Road Control Services Ltd. The design information contained herein is strictly confidential. This document is not to be used, reproduced, disclosed or circulated in whole or in part without prior written consent.

CLIENT

Kilsaran
ideas taking shape

DESIGN PARAMETERS		Speed Limit	Road Classification
Advance Warning Signage			1(iii) Type A >12hours
Sign size	600mm	Cones Cone Height 750mm Taper Spacing 3m Longitudinal Spacing 3m	
Sign Visibility	50m		
Number of Signs	2		
Cumulative Distance	40m	Safety Zones Longitudinal 5m Lateral 0.5m	
Distance between Advance Warning Signs	20m		
Taper			
Lane Taper Rate	N/A	Lanes Lane Width 3.0m	
Hard Shoulder Taper Rate	N/A		

LEGEND

- Works Area
- Traffic sign
- Traffic cones
- Local Access
- Diversion Route A
- Diversion Route B

GENERAL NOTES

1) All information contained in this drawing (including digital data) should be checked and verified prior to any stage of construction;

2) All works are to be carried out in accordance with local authority requirements and are to be included in the site-specific safety & health plan;

3) Site inspections and maintenance of the traffic management layout is to be agreed with local authority to ensure the safety and integrity of the design;

4) Contractor to carry out a site risk assessment prior to the installation of any traffic management plan to ensure that conditions reflect those considered for design post submission;

5) Contractor shall be responsible for the provision of ramp access at any change in road surface level where traffic runs on a temporary surface, and for pedestrian/cycle ramps where footpath/cycle-ways have a level discontinuity as per result of the works.

Rev	Date	Details	Dm	Chk	App	Dm	DJ
						Chk	SD
						App	DH
						Date	23-04-2024
						Scale	NTS @A3
						Stage	CONSTRUCTION

Project

L-5015-1 Bog Road Portarlinton, Co. Offaly

Title

TEMPORARY TRAFFIC MANAGEMENT DIVERSION ROUTE

Drawing No

C25002_09_001

Rev

0