



N62 DOON & CRANCREAGH NATIONAL ROAD PAVEMENT

TRAFFIC MANAGEMENT PLAN



APRIL 2025



N62 DOON & CRANCREAGH NATIONAL ROAD PAVEMENT

TRAFFIC MANAGEMENT PLAN - DRAWING INDEX

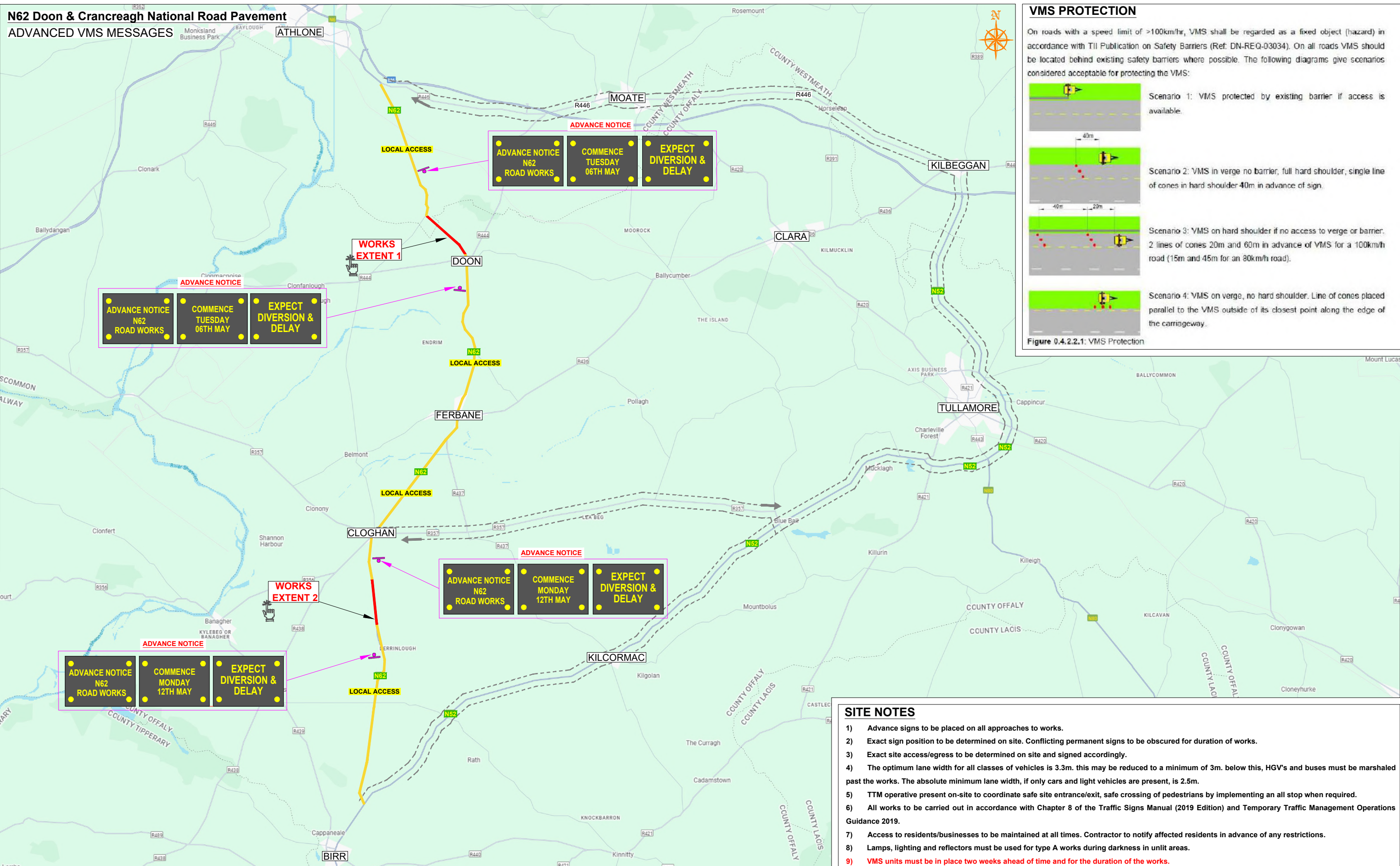
DRAWING NO.

DRAWING NAME.

C25002_11_000	N62 Doon & Crancreagh National Road Pavement - Advanced VMS messages
C25002_11_000A	N62 Doon & Crancreagh National Road Pavement- VMS Positioning
C25002_11_001	N62 Doon & Crancreagh National Road Pavement - HGV's Diversion
C25002_11_002	N62 Doon & Crancreagh National Road Pavement - Local Traffic Diversion 1
C25002_11_003	N62 Doon & Crancreagh National Road Pavement - Local Traffic Diversion 2

N62 Doon & Crancreagh National Road Pavement

ADVANCED VMS MESSAGES



ROAD CONTROL

Copyright Notes:
This drawing is the property of Road Control Services Ltd. The design information contained herein is strictly confidential. This document is not to be used, reproduced, disclosed or circulated in whole or in part without prior written consent.

Road Control Services Ltd, Curryville, Prosperous Co. Kildare - info@roadcontrol.ie

CLIENT

Kilsaran
ideas taking shape

DESIGN PARAMETERS

Advance Warning Signage	
Sign size	750mm
Sign Visibility	120m
Number of Signs	4
Cumulative Distance	800m
Distance between Advance Warning Signs	200m
Taper	
Lane Taper Rate	N/A
Hard Shoulder Taper Rate	N/A

Speed Limit	100
Road Classification	Type A 2(ii) >12hours
Cones	
Cone Height	1.000mm
Taper Spacing	3m
Longitudinal Spacing	12m
Safety Zones	
Longitudinal	60m
Lateral	1.2m
Lanes	
Lane Width	3.0m

LEGEND

- Works Area
- Local Access
- VMS Board
- Proposed Hgv's Diversion

GENERAL NOTES

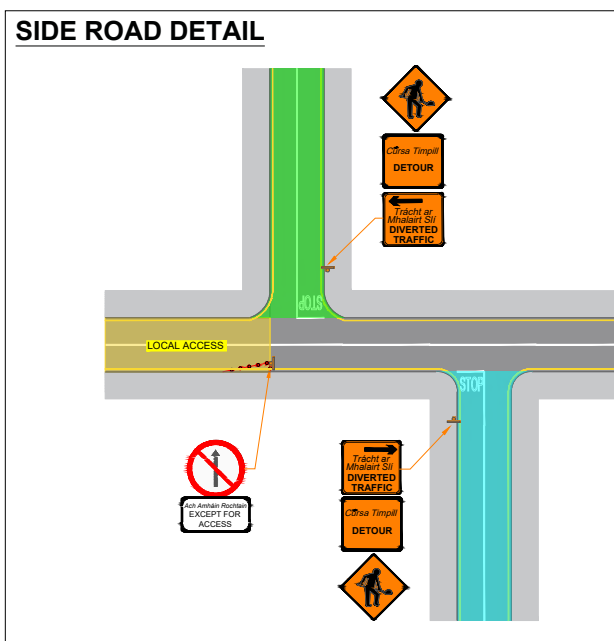
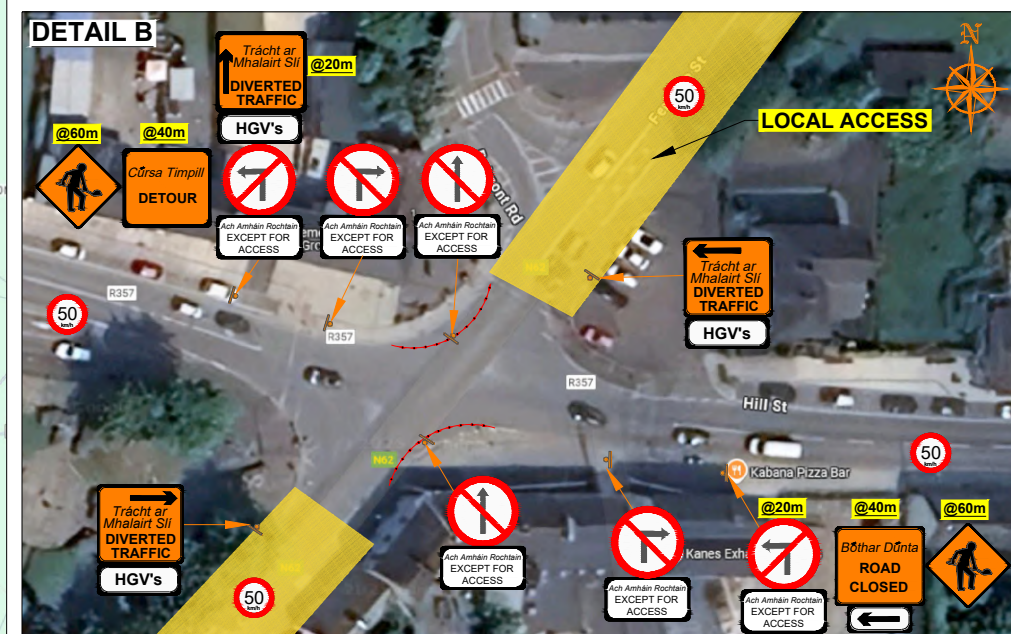
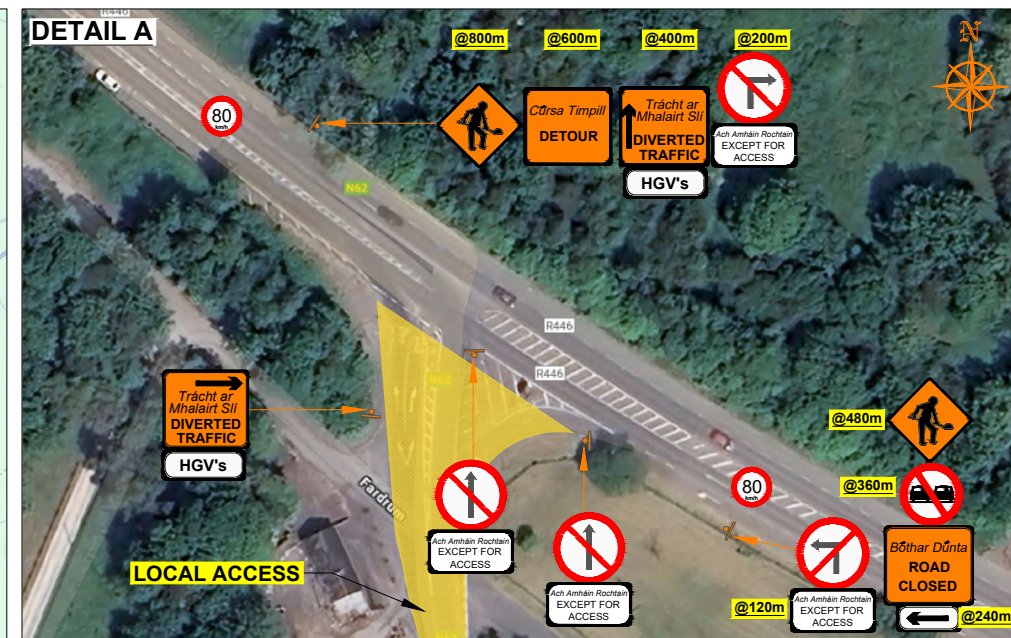
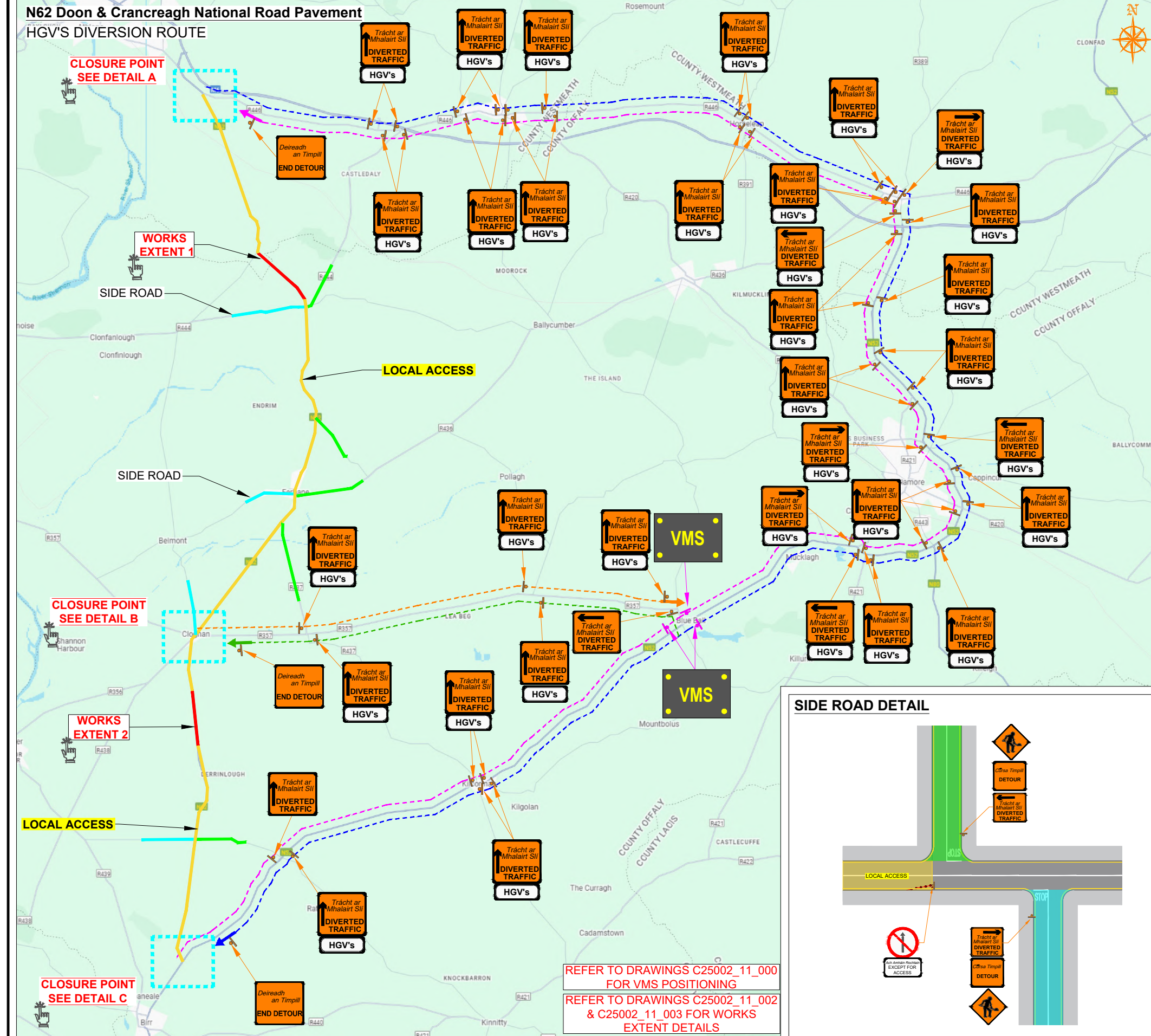
- 1) All information contained in this drawing (including digital data) should be checked and verified prior to any stage of construction;
- 2) All works are to be carried out in accordance with local authority requirements and are to be included in the site-specific safety & health plan;
- 3) Site inspections and maintenance of the traffic management layout is to be agreed with local authority to ensure the safety and integrity of the design;
- 4) Contractor to carry out a site risk assessment prior to the installation of any traffic management plan to ensure that conditions reflect those considered for design post submission;
- 5) Contractor shall be responsible for the provision of ramp access at any change in road surface level where traffic runs on a temporary surface, and for pedestrian/cycle ramps where footpath/cycle-ways have a level discontinuity as per result of the works.

Rev	Date	Details	Dm	Chk	App	Dm	DJ
						Chk	SD
						App	DH
						Date	28-04-2025
						Scale	NTS @A3
						Stage	CONSTRUCTION

Project	N62 Doon & Crancreagh National Road Pavement	
Title	TEMPORARY TRAFFIC MANAGEMENT PLAN ADVANCED VMS MESSAGES	
Drawing No	C25002_11_000	Rev 0

N62 Doon & Crancreagh National Road Pavement

HGV'S DIVERSION ROUTE




Copyright Notes:
This drawing is the property of Road Control Services Ltd. The design information contained herein is strictly confidential. This document is not to be used, reproduced, disclosed or circulated in whole or in part without prior written consent.

CLIENT











DESIGN PARAMETERS

Advance Warning Signage			2(ii)	>12hours
Sign size	750mm	Cones		
Sign Visibility	120m	Cone Height	1.000mm	
Number of Signs	4	Taper Spacing	3m	
Cumulative Distance	800m	Longitudinal Spacing	12m	
Distance between Advance Warning Signs	200m	Safety Zones		
Taper		Longitudinal	60m	
Lane Taper Rate	N/A	Lateral	1.2m	
Hard Shoulder Taper Rate	N/A	Lanes		
		Lane Width	3.0m	

Speed Limit		Road Classification	Type A >12hours
Cones			
Cone Height	1.000mm		
Taper Spacing	3m		
Longitudinal Spacing	12m		
Safety Zones			
Longitudinal	60m		
Lateral	1.2m		
Lanes			
Lane Width	3.0m		

LEGEND

-  Works Area
-  Traffic sign
-  Traffic cones
-  Diversion Road
-  Diversion Road
-  Diversion Road
-  Diversion Road
-  Local Access

GENERAL NOTES	
----------------------	--

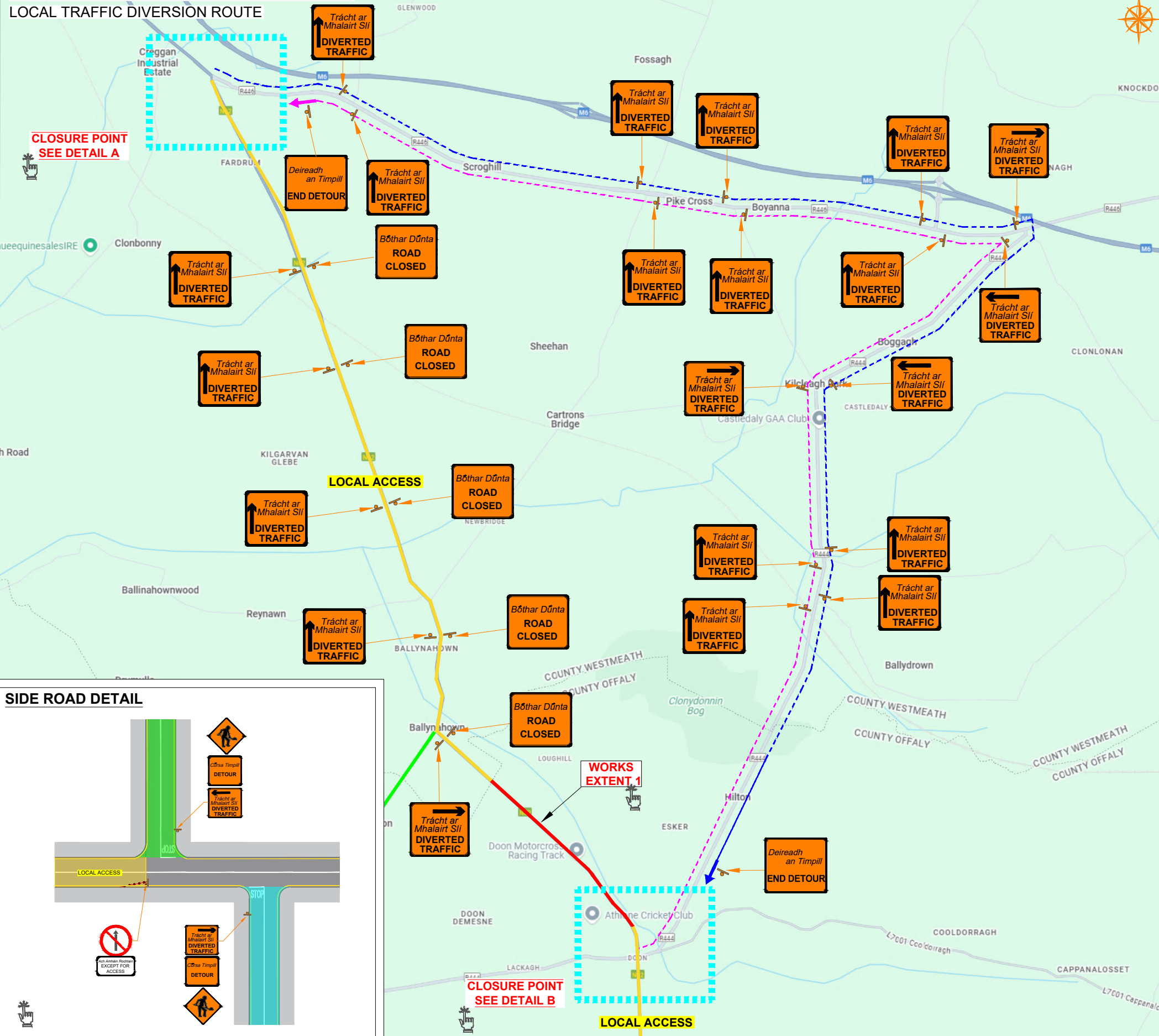
- 1) All information contained in this drawing (including digital data) should be checked and verified prior to any stage of construction;
- 2) All works are to be carried out in accordance with local authority requirements and are to be included in the site-specific safety & health plan;
- 3) Site inspections and maintenance of the traffic management layout is to be agreed with local authority to ensure the safety and integrity of the design;
- 4) Contractor to carry out a site risk assessment prior to the installation of any traffic management plan to ensure that conditions reflect those considered for design post submission;
- 5) Contractor shall be responsible for the provision of ramp access at any change in road surface, for the provision of traffic runs on a temporary surface, and for pedestrian/cycle ramps where footpath/cycle-ways have a level discontinuity as per result of the works.

Rev	Date	Details	Drm	Chk	App	Drm	DJ
						Chk	SD
						App	DH
						Date	25-04-2025
						Scale	NTS @A3
						Stage	CONSTRUCTION

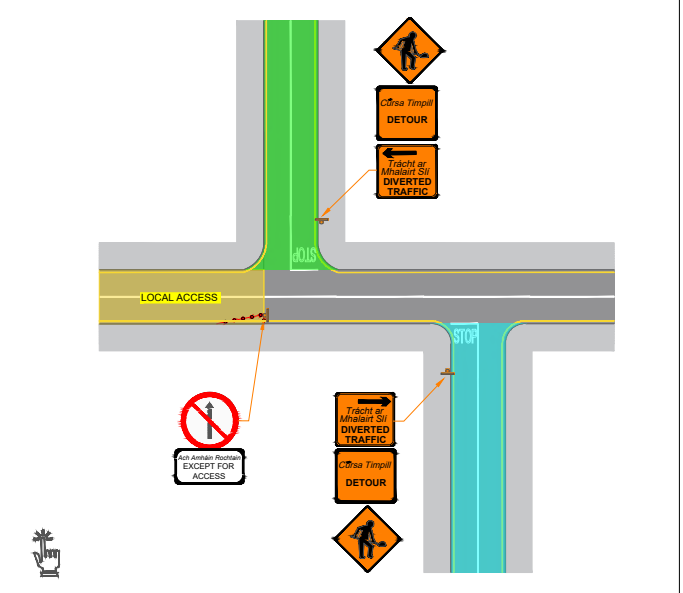
Project	<u>N62 Doon & Crancreagh National Road Pavement</u>		
Title	TEMPORARY TRAFFIC MANAGEMENT PLAN HGV'S DIVERSION ROUTE		
Drawing No	C25002_11_001	Rev	0

N62 Doon & Crancreagh National Road Pavement

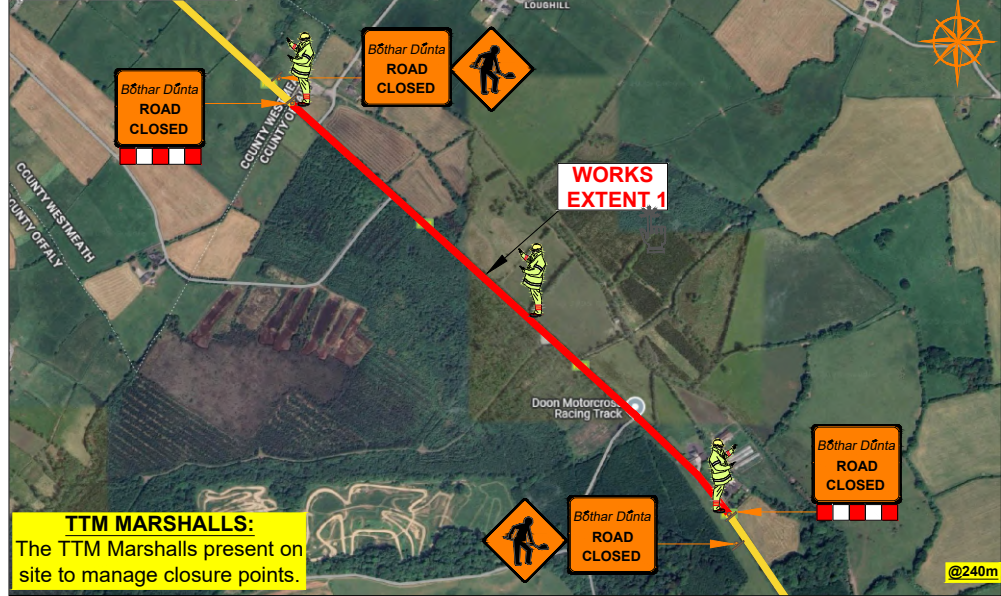
LOCAL TRAFFIC DIVERSION ROUTE



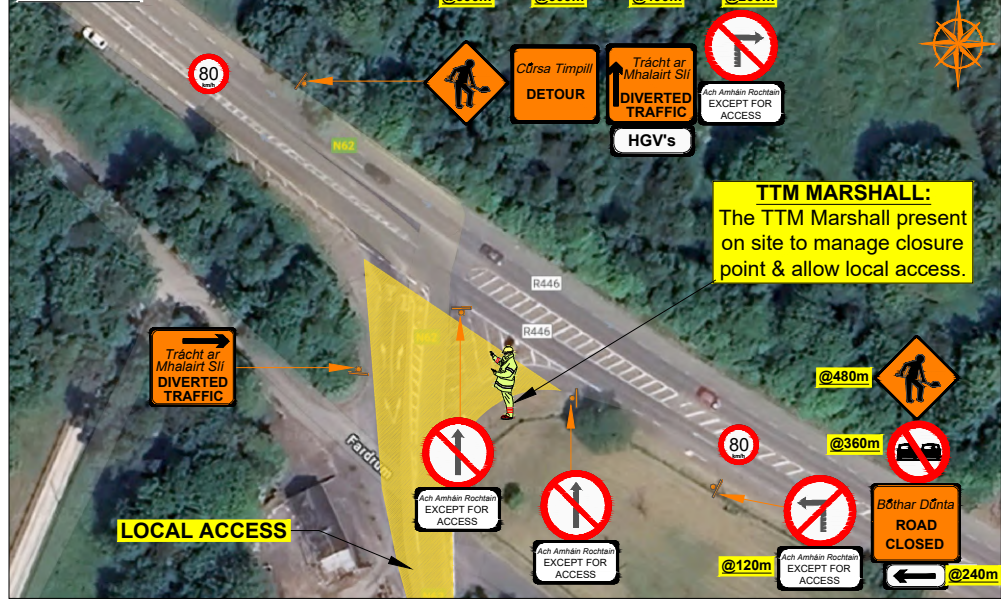
SIDE ROAD DETAIL



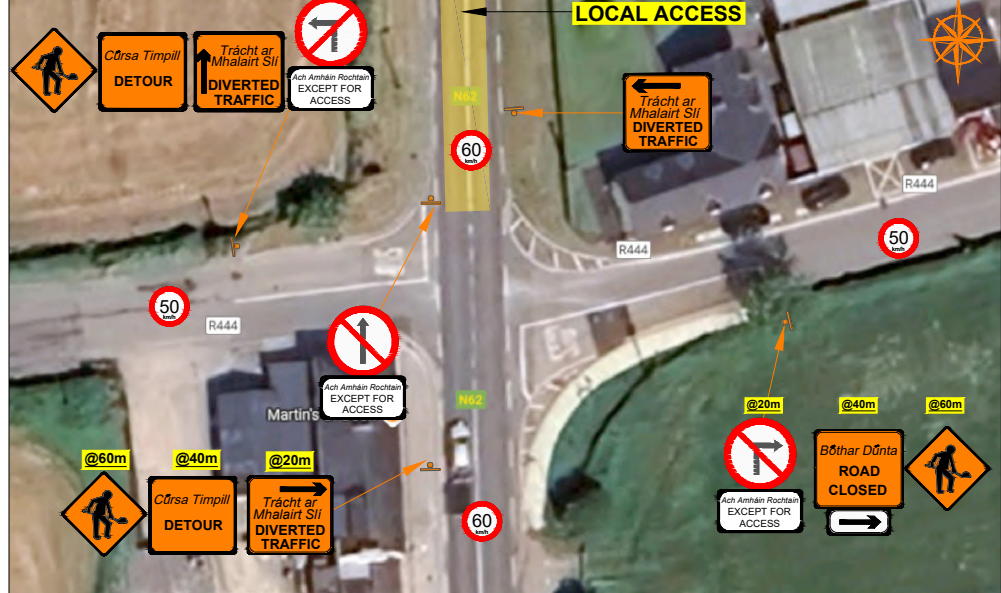
WORKS EXTENT



DETAIL A



DETAIL B



ROAD CONTROL

Copyright Notes:
This drawing is the property of Road Control Services Ltd. The design information contained herein is strictly confidential. This document is not to be used, reproduced, disclosed or circulated in whole or in part without prior written consent.

CLIENT

ideas taking shape

DESIGN PARAMETERS	
Advance Warning Signage	
Sign size	750mm
Sign Visibility	120m
Number of Signs	4
Cumulative Distance	800m
Distance between Advance Warning Signs	200m
Taper	
Lane Taper Rate	N/A
Hard Shoulder Taper Rate	N/A

Speed Limit	
100	

Road Classification	
2(ii)	Type A >12hours

LEGEND	
	Works Area
	Traffic sign
	Traffic cones
	Diverison Route A
	Diverison Route B
	Local Access

GENERAL NOTES

1) All information contained in this drawing (including digital data) should be checked and verified prior to any stage of construction;

2) All works are to be carried out in accordance with local authority requirements and are to be included in the site-specific safety & health plan;

3) Site inspections and maintenance of the traffic management layout is to be agreed with local authority to ensure the safety and integrity of the design;

4) Contractor to carry out a site risk assessment prior to the installation of any traffic management plan to ensure that conditions reflect those considered for design post submission;

5) Contractor shall be responsible for the provision of ramp access at any change in road surface level where traffic runs on a temporary surface, and for pedestrian/cycle ramps where footpath/cycle-ways have a level discontinuity as per result of the works.

Rev	Date	Details	Dm	Chk	App	Dm	DJ
						Chk	SD
						App	DH
						Date	25-04-2025
						Scale	NTS @A3
						Stage	CONSTRUCTION

Project	
N62 Doon & Crancreagh National Road Pavement	
Title	
TEMPORARY TRAFFIC MANAGEMENT PLAN LOCAL TRAFFIC DIVERSION	
Drawing No	C25002_11_002
Rev	0

