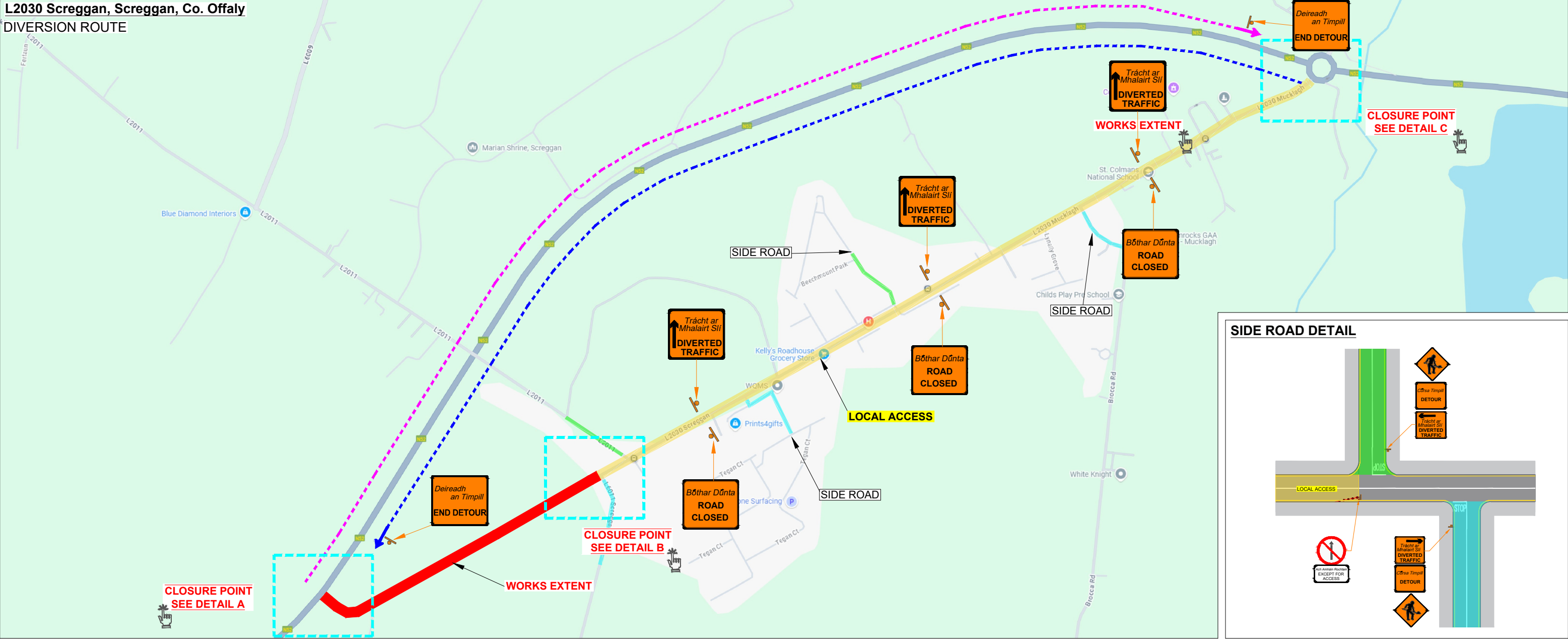
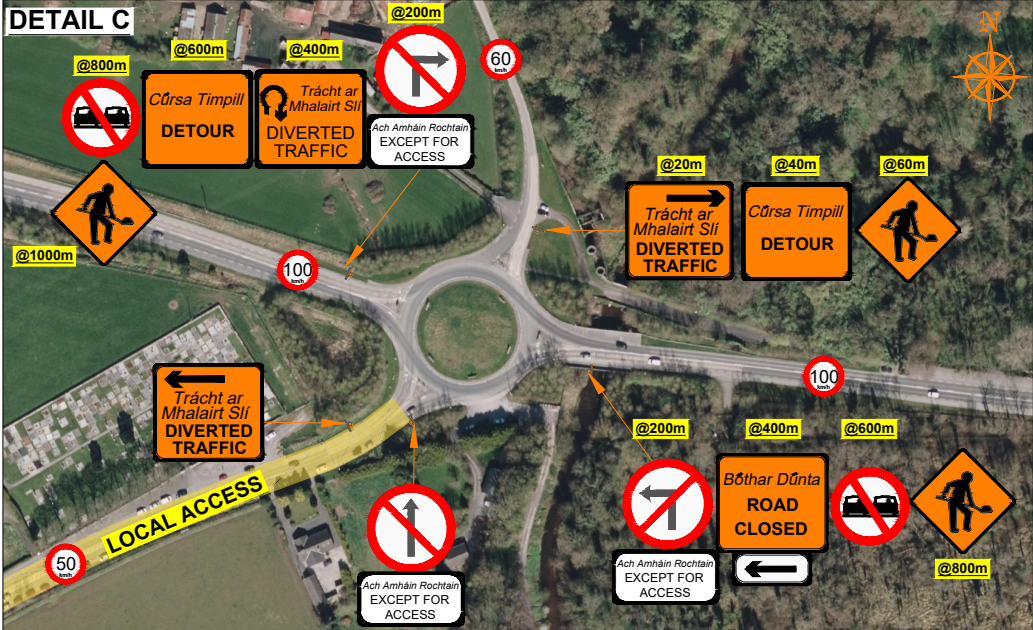
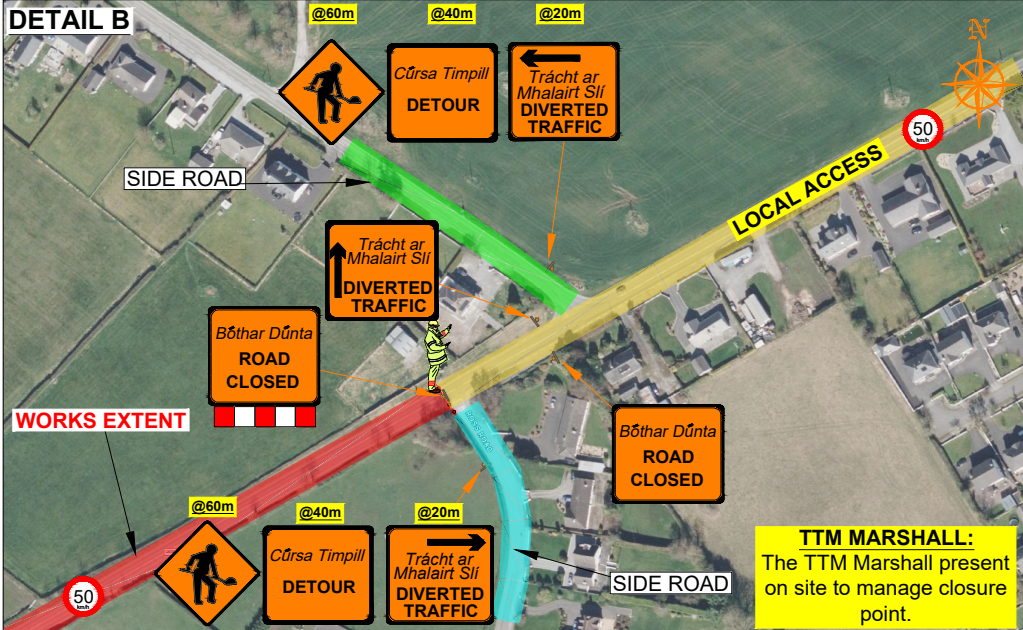
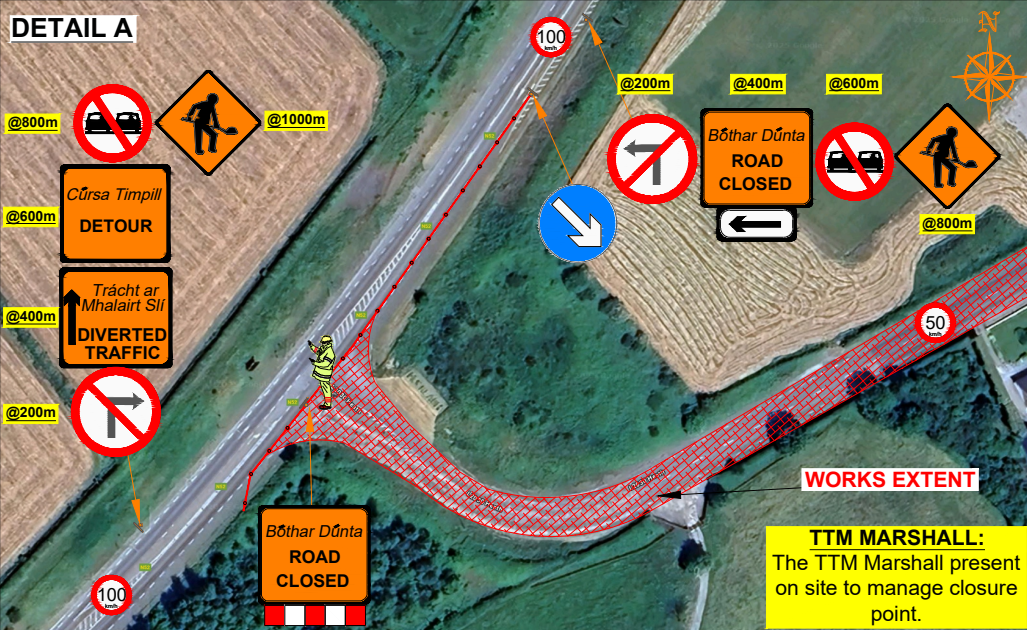
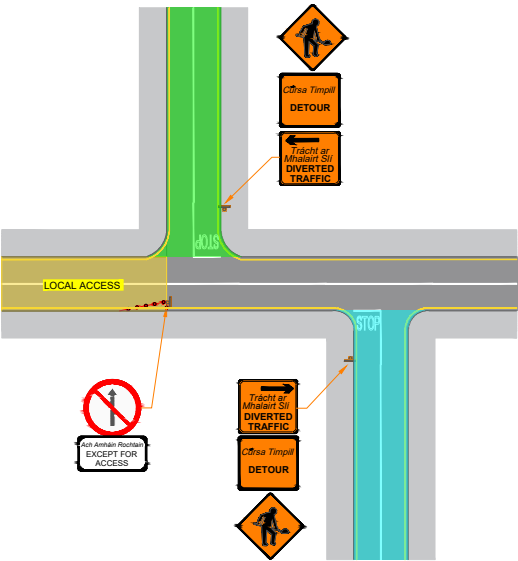




L2030 Screggan, Screggan, Co. Offaly  
DIVERSION ROUTE



SIDE ROAD DETAIL



<div><h1>ROAD CONTROL</h1><p><small>Copyright Notes:</small> This drawing is the property of Road Control Services Ltd. The design information contained herein is strictly confidential. This document is not to be used, reproduced, disclosed or circulated in whole or in part without prior written consent.</p><p><small>Road Control Services Ltd. Curryhill, Prosperous, Co. Kildare - info@roadcontrol.ie © 2020</small></p></div>	<div><h2>Kilsaran</h2><p>ideas taking shape</p></div>	CLIENT		DESIGN PARAMETERS		Speed Limit	<div><div>50</div><div>km/h</div></div>	Road Classification	<div><div>Type A</div><div>1(iii)</div><div>&gt;12hours</div></div>	LEGEND		GENERAL NOTES		Rev	Date	Details	Drm	Chk	App	Drm	DJ	Project								
		Advance Warning Signage				Sign size		600mm	Cones		<div><div><div><div>XXXX</div></div></div> Works Area</div> <div><div><div><div>●</div></div></div> Traffic sign</div> <div><div><div><div>● ● ● ●</div></div></div> Traffic cones</div> <div><div><div><div>—</div></div></div> Local Access</div> <div><div><div><div>     </div></div></div> Diversion Route A</div> <div><div><div><div>     </div></div></div> Diversion Route B</div>		1) All information contained in this drawing (including digital data) should be checked and verified prior to any stage of construction; 2) All works are to be carried out in accordance with local authority requirements and are to be included in the site-specific safety & health plan; 3) Site inspections and maintenance of the traffic management layout is to be agreed with local authority to ensure the safety and integrity of the design; 4) Contractor to carry out a site risk assessment prior to the installation of any traffic management plan to ensure that conditions reflect those considered for design post submission; 5) Contractor shall be responsible for the provision of ramp access at any change in road surface level where traffic runs on a temporary surface, and for pedestrian/cycle ramps where footpath/cycle-ways have a level discontinuity as per result of the works.																	Title
		Sign Visibility				50m		Cone Height		750mm														L2030 Screggan, Screggan, Co. Offaly						
		Number of Signs				2		Taper Spacing		3m															TEMPORARY TRAFFIC MANAGEMENT DIVERSION ROUTE					
		Cumulative Distance				40m		Longitudinal Spacing		3m																Drawing No				
Distance between Advance Warning Signs				20m		Safety Zones																C25002_12_001								
						Longitudinal		5m															Rev							
						Lateral		0.5m																0						
						Lanes																								
						Lane Width		3.0m																						