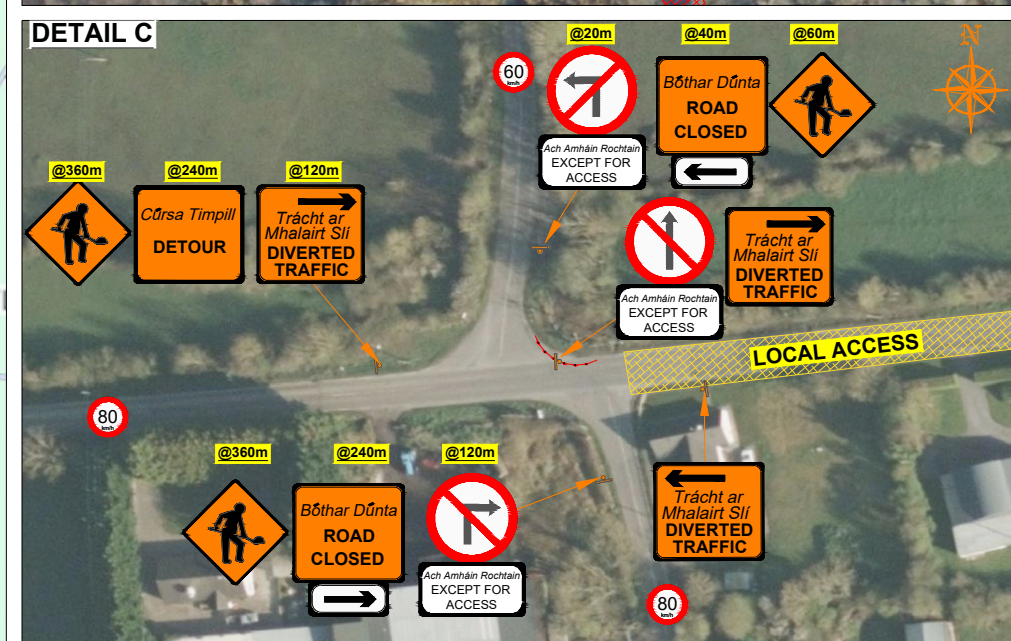
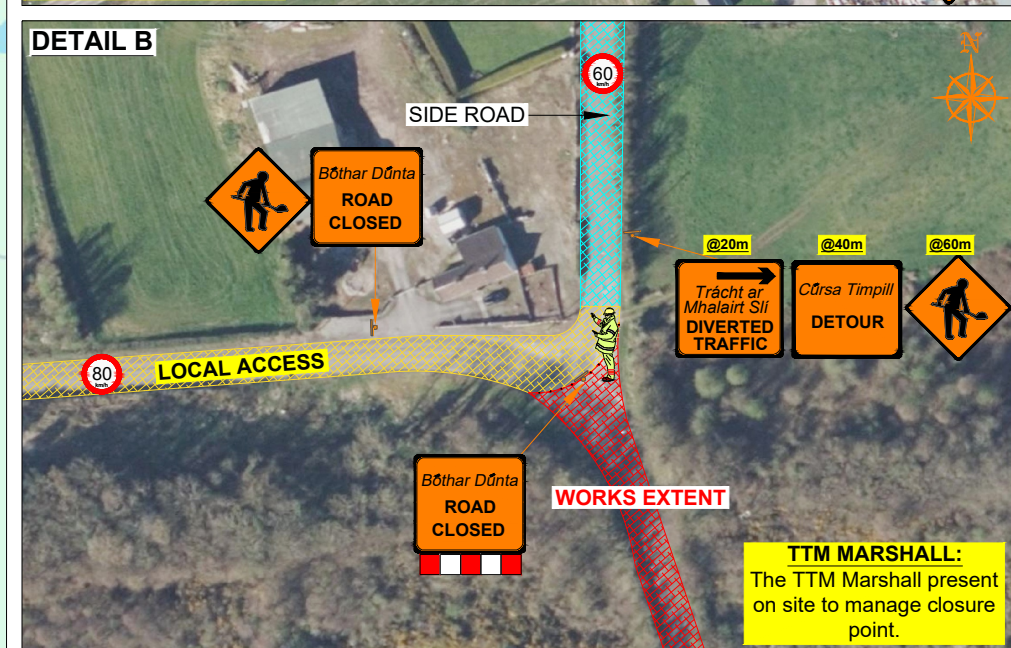
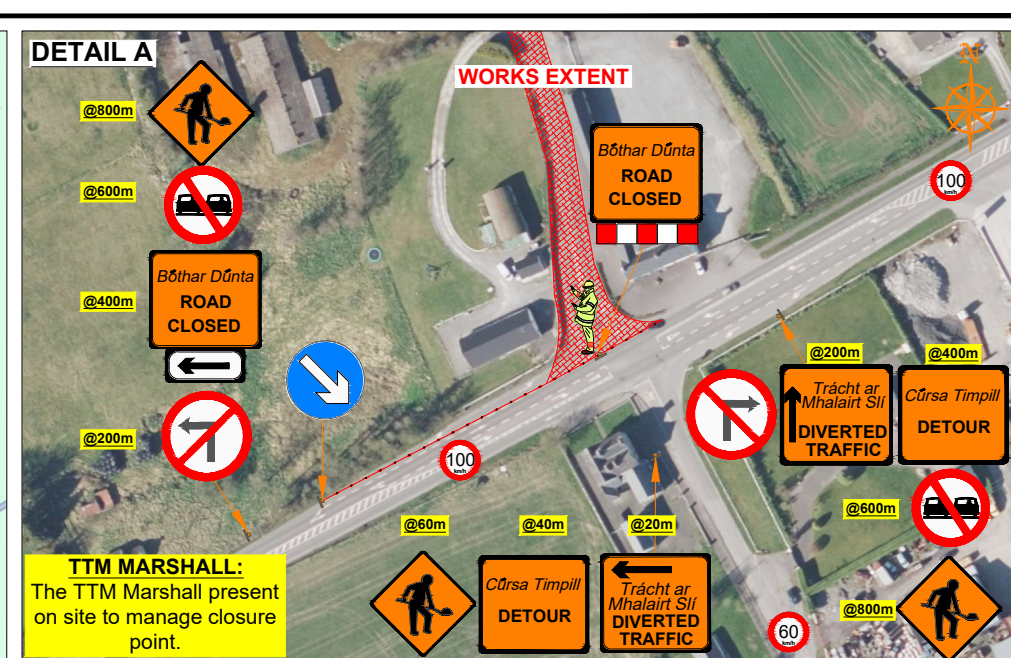
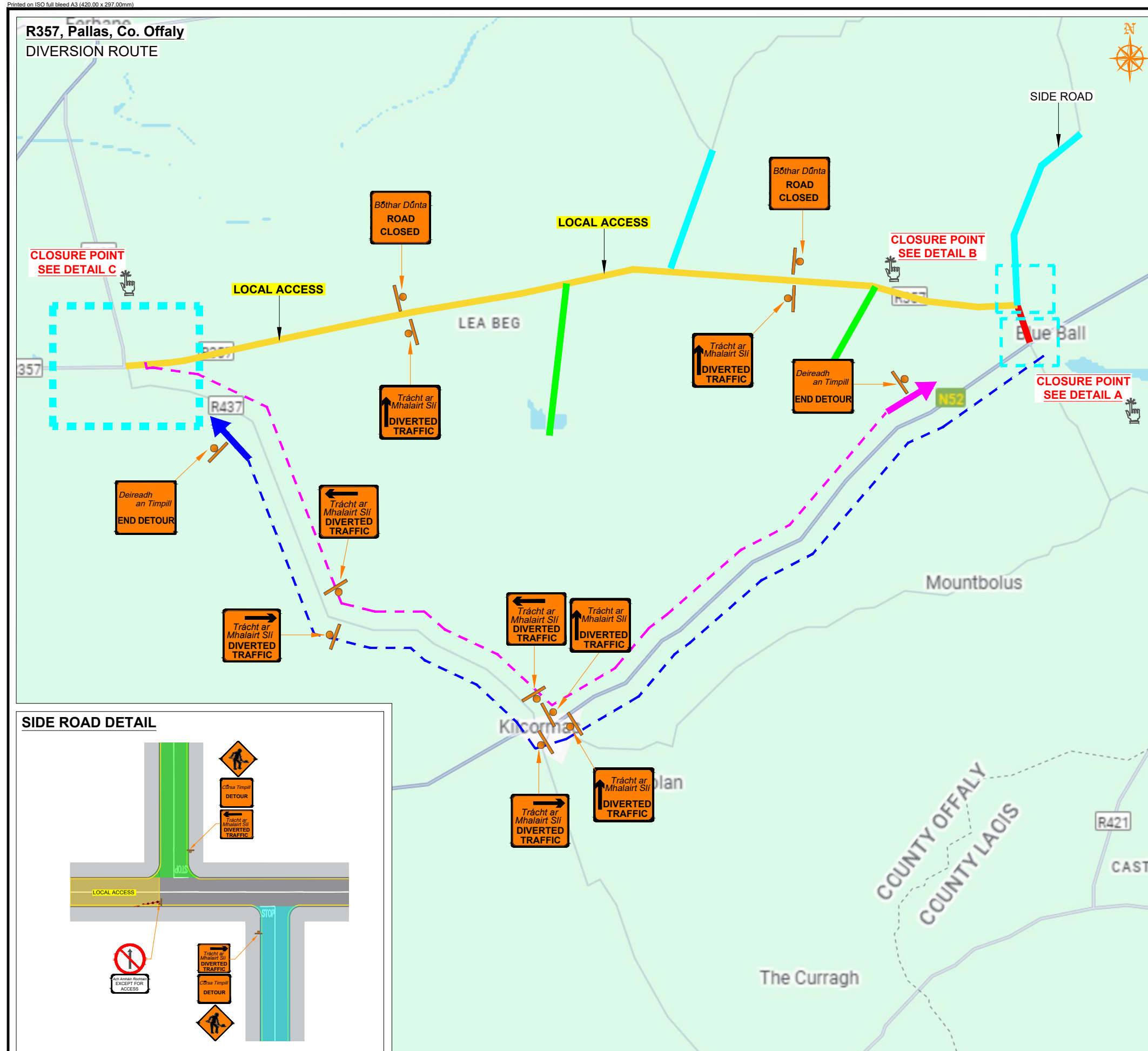


R357, Pallas, Co. Offaly
DIVERSION ROUTE



Copyright Notes:
This drawing is the property of Road Control Services Ltd. The design information contained herein is strictly confidential. This document is not to be used, reproduced, disclosed or circulated in whole or in part without prior written consent.


ROAD CONTROL









CLIENT

DESIGN PARAMETERS

Advance Warning Signage	
Sign size	600mm
Sign Visibility	90m
Number of Signs	4
Cumulative Distance	480m
Distance between Advance Warning Signs	120m
Taper	
Lane Taper Rate	N/A
Hard Shoulder Taper Rate	N/A

Speed Limit		Road Classification	Type A
		2(i)	>12hours
Cones			
Cone Height			750mm
Taper Spacing			3m
Longitudinal Spacing			12m
Safety Zones			
Longitudinal			45m
Lateral			1.2m
Lanes			
Lane Width			3.0m

LEGEND

 Works Area
 Traffic sign
 Traffic cones
 Diversion Route A
 Diversion Route B
 Local Access

GENERAL NOTES

- 1) All information contained in this drawing (including digital data) should be checked and verified prior to any stage of construction;
- 2) All works are to be carried out in accordance with local authority requirements and are to be included in the site-specific safety & health plan; the inspection and maintenance of the works and the management layout is to be agreed with local authority to ensure the safety and integrity of the design;
- 4) Contractor to carry out a site risk assessment prior to the installation of any traffic management plan to ensure that conditions reflect those considered for design post submission;
- 5) Contractor shall be responsible for the provision of ramp access at any works in road, and for the provision of temporary ramps on temporary surface, and for pedestrian/cycle ramps where footpath/cycle-ways have a level discontinuity as per result of the works.

Rev	Date	Details	Drm	Chk	App	Drm	DJ
						Chk	SD
						App	DH
						Date	16-05-2025
						Scale	NTS @A3
						Stage	CONSTRUCTION

Project	<u>R357, Pallas, Co. Offaly</u>		
Title	TEMPORARY TRAFFIC MANAGEMENT PLAN DIVERSION ROUTE		
Drawing No	C25002 13 001	Rev	0