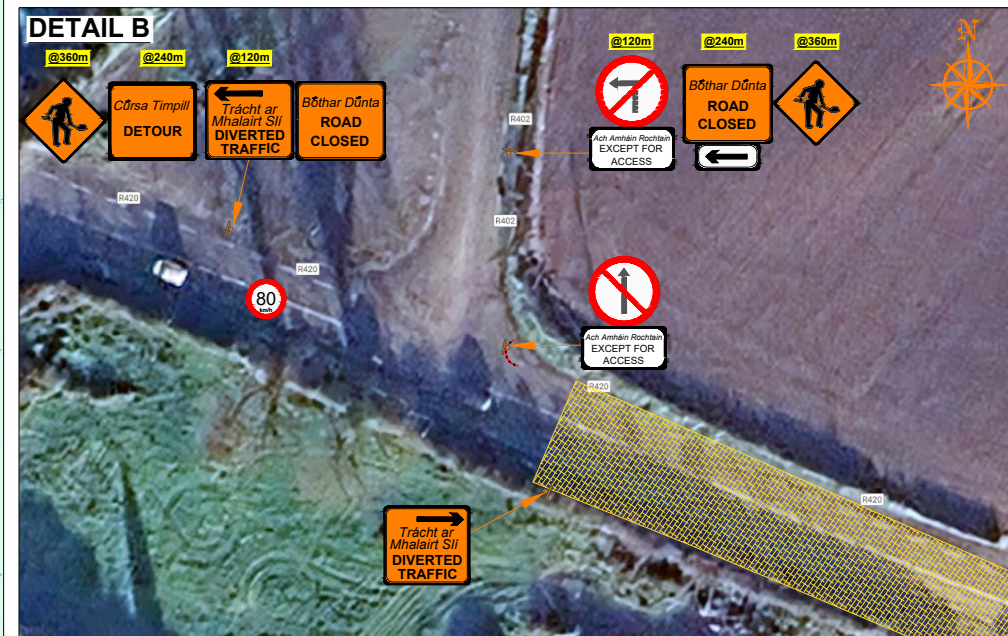
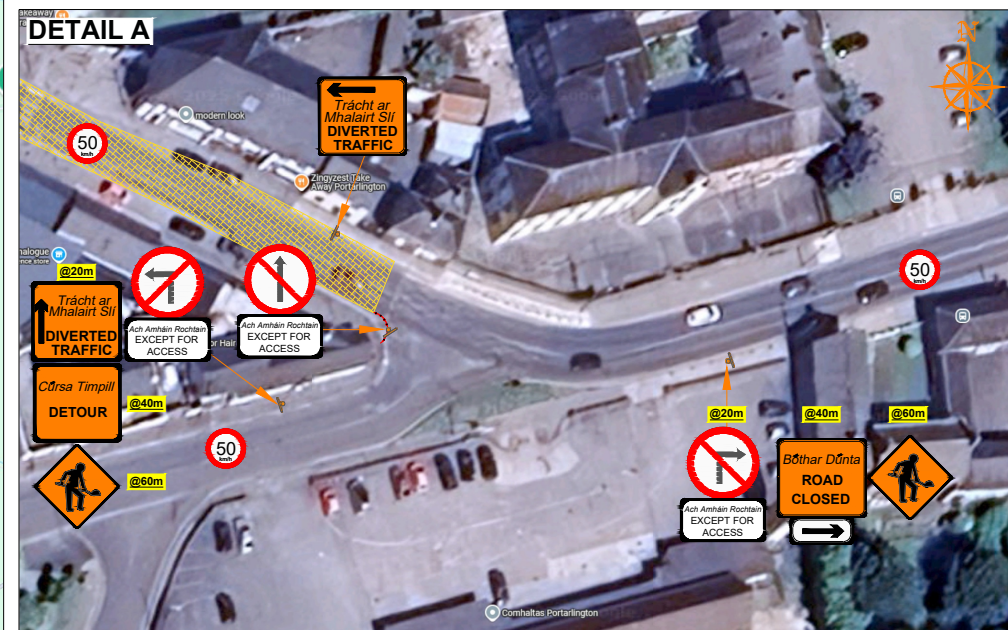
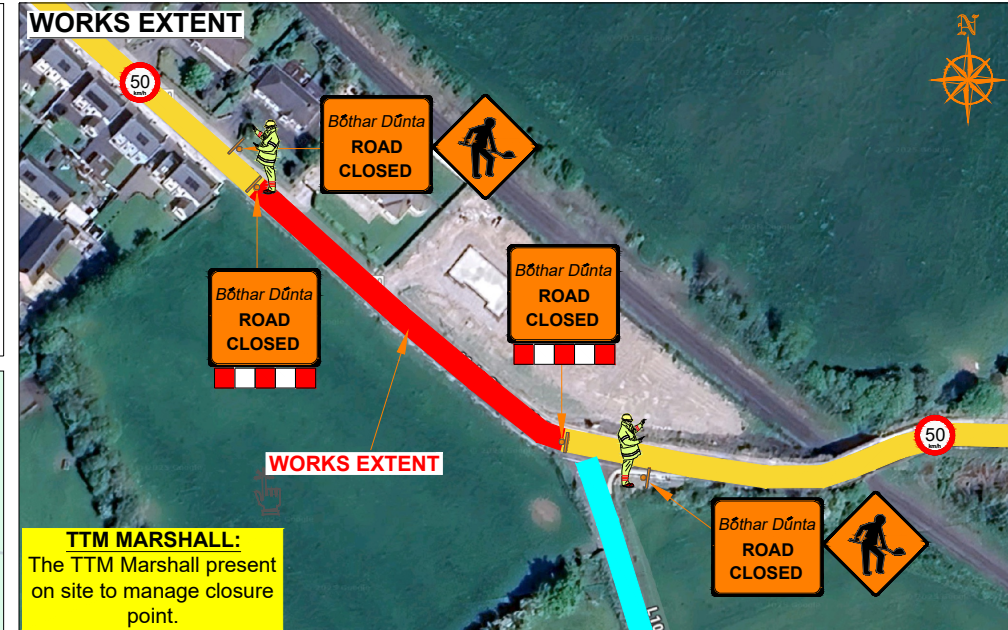
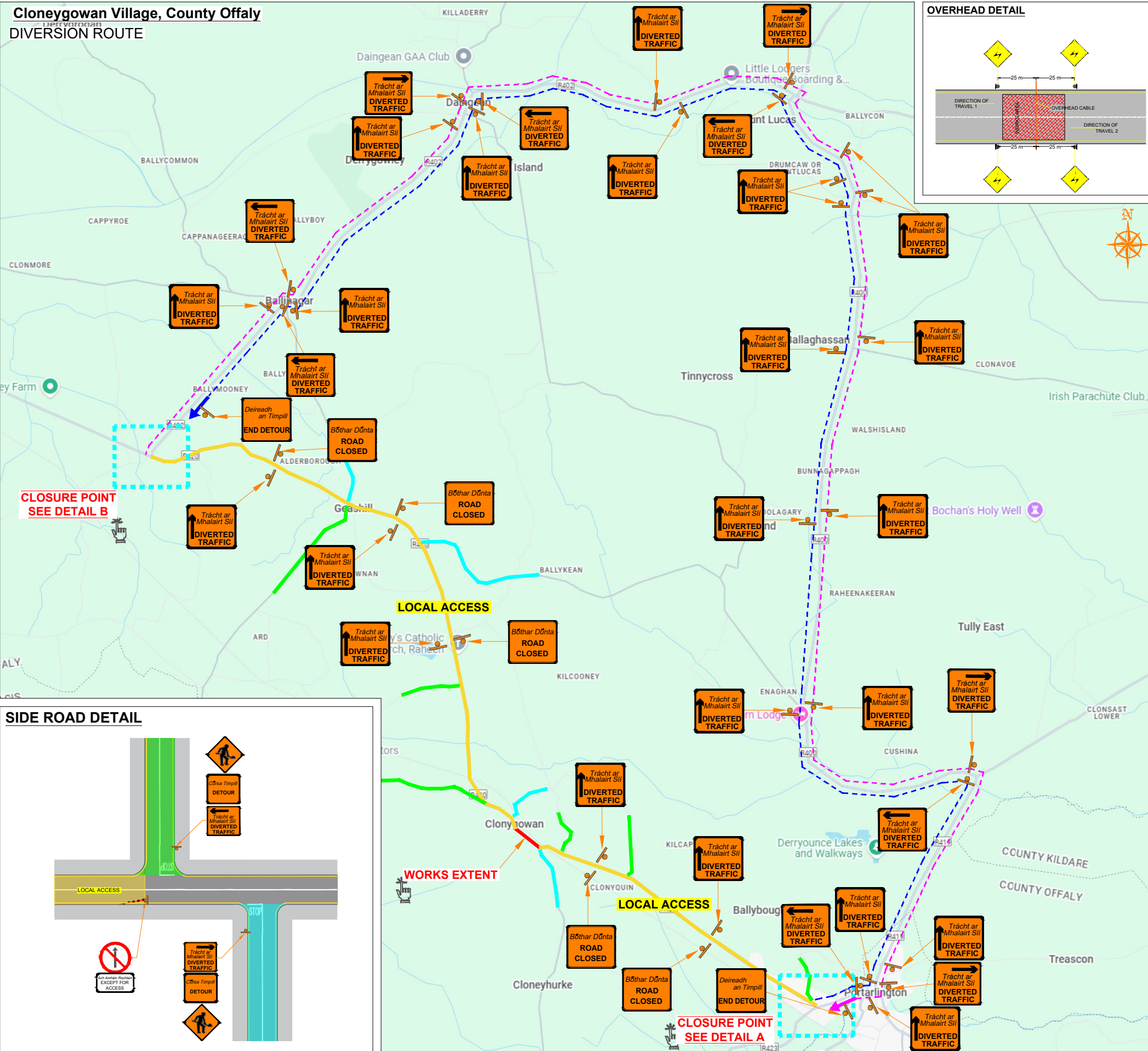













Cloneygowan Village, County Offaly

DIVERSION ROUTE



 <div><h1>ROAD CONTROL</h1><p><small>Copyright Notes:</small> This drawing is the property of Road Control Services Ltd. The design information contained herein is strictly confidential. This document is not to be used, reproduced, disclosed or circulated in whole or in part without prior written consent.</p><p><small>Road Control Services Ltd. Cumyhlis, Prosperous, Co. Wick. info@roadcontrol.ie © 2020</small></p></div>	<h2>CLIENT</h2> <div><p>Kilsaran ideas taking shape</p></div>	<table><tr><th colspan="2">DESIGN PARAMETERS</th></tr><tr><td colspan="2">Advance Warning Signage</td></tr><tr><td>Sign size</td><td>600mm</td></tr><tr><td>Sign Visibility</td><td>90m</td></tr><tr><td>Number of Signs</td><td>4</td></tr><tr><td>Cumulative Distance</td><td>480m</td></tr><tr><td>Distance between Advance Warning Signs</td><td>120m</td></tr><tr><td colspan="2">Taper</td></tr><tr><td>Lane Taper Rate</td><td>N/A</td></tr><tr><td>Hard Shoulder Taper Rate</td><td>N/A</td></tr></table>	DESIGN PARAMETERS		Advance Warning Signage		Sign size	600mm	Sign Visibility	90m	Number of Signs	4	Cumulative Distance	480m	Distance between Advance Warning Signs	120m	Taper		Lane Taper Rate	N/A	Hard Shoulder Taper Rate	N/A	<table><tr><td>Speed Limit</td><td></td></tr><tr><td>Road Classification</td><td>Type A 2(i) >12hours</td></tr></table>	Speed Limit		Road Classification	Type A 2(i) >12hours	<h2>LEGEND</h2> <div><div> Work Area</div><div> Traffic sign</div><div> Traffic cones</div><div> Diversion Route A</div><div> Diversion Route B</div><div> Local Access</div></div>	<h2>GENERAL NOTES</h2> <div>1) All information contained in this drawing (including digital data) should be checked and verified prior to any stage of construction; 2) All works are to be carried out in accordance with local authority requirements and are to be included in the site-specific safety & health plan; 3) Site inspections and maintenance of the traffic management layout is to be agreed with local authority to ensure the safety and integrity of the design; 4) Contractor to carry out a site risk assessment prior to the installation of any traffic management plan to ensure that conditions reflect those considered for design post submission; 5) Contractor shall be responsible for the provision of ramp access at any change in road surface level where traffic runs on a temporary surface, and for pedestrian/cycle ramps where footpath/cycle-ways have a level discontinuity as per result of the works.</div>	<table><tr><th>Rev</th><th>Date</th><th>Details</th><th>Dm</th><th>Chk</th><th>App</th><th>Dm</th><th>DJ</th></tr><tr><td></td><td></td><td></td><td></td><td></td><td></td><td>Chk</td><td>SD</td></tr><tr><td></td><td></td><td></td><td></td><td></td><td></td><td>App</td><td>DH</td></tr><tr><td></td><td></td><td></td><td></td><td></td><td></td><td>Date</td><td>30-06-2025</td></tr><tr><td></td><td></td><td></td><td></td><td></td><td></td><td>Scale</td><td>NTS @A3</td></tr><tr><td></td><td></td><td></td><td></td><td></td><td></td><td>Stage</td><td>CONSTRUCTION</td></tr></table>	Rev	Date	Details	Dm	Chk	App	Dm	DJ							Chk	SD							App	DH							Date	30-06-2025							Scale	NTS @A3							Stage	CONSTRUCTION	<table><tr><td colspan="2">Project</td></tr><tr><td colspan="2">R420-3, Cloneygowan Village, County Offaly</td></tr><tr><td colspan="2">Title</td></tr><tr><td colspan="2">TEMPORARY TRAFFIC MANAGEMENT PLAN DIVERSION ROUTE</td></tr><tr><td>Drawing No</td><td>C25002_17_001</td></tr><tr><td>Rev</td><td>0</td></tr></table>	Project		R420-3, Cloneygowan Village, County Offaly		Title		TEMPORARY TRAFFIC MANAGEMENT PLAN DIVERSION ROUTE		Drawing No	C25002_17_001	Rev	0
		DESIGN PARAMETERS																																																																																									
Advance Warning Signage																																																																																											
Sign size	600mm																																																																																										
Sign Visibility	90m																																																																																										
Number of Signs	4																																																																																										
Cumulative Distance	480m																																																																																										
Distance between Advance Warning Signs	120m																																																																																										
Taper																																																																																											
Lane Taper Rate	N/A																																																																																										
Hard Shoulder Taper Rate	N/A																																																																																										
Speed Limit																																																																																											
Road Classification	Type A 2(i) >12hours																																																																																										
Rev	Date	Details	Dm	Chk	App	Dm	DJ																																																																																				
						Chk	SD																																																																																				
						App	DH																																																																																				
						Date	30-06-2025																																																																																				
						Scale	NTS @A3																																																																																				
						Stage	CONSTRUCTION																																																																																				
Project																																																																																											
R420-3, Cloneygowan Village, County Offaly																																																																																											
Title																																																																																											
TEMPORARY TRAFFIC MANAGEMENT PLAN DIVERSION ROUTE																																																																																											
Drawing No	C25002_17_001																																																																																										
Rev	0																																																																																										