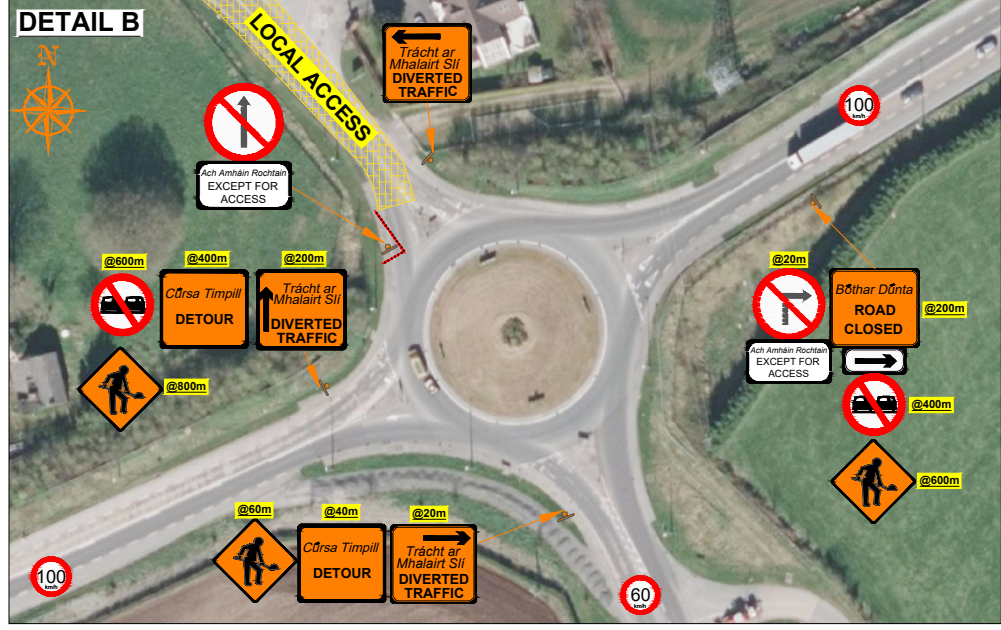
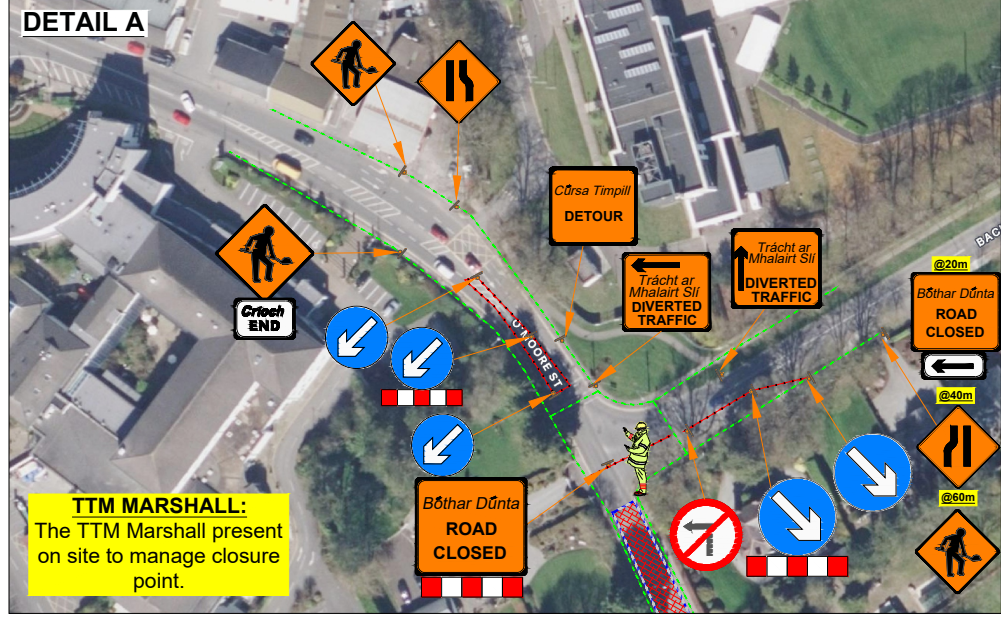
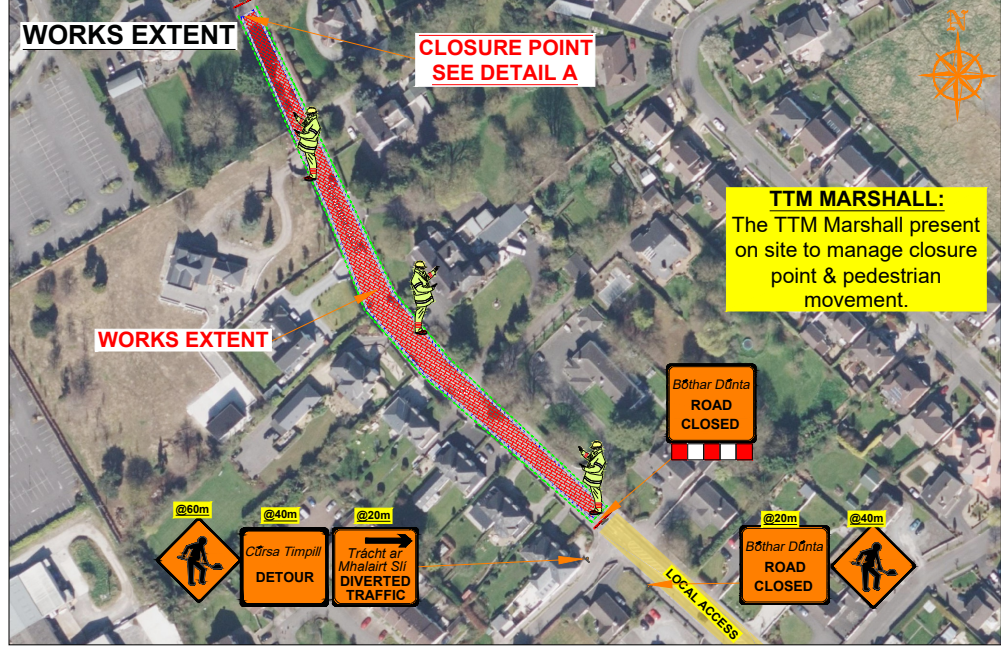
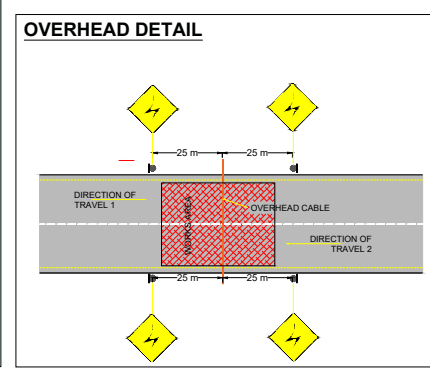
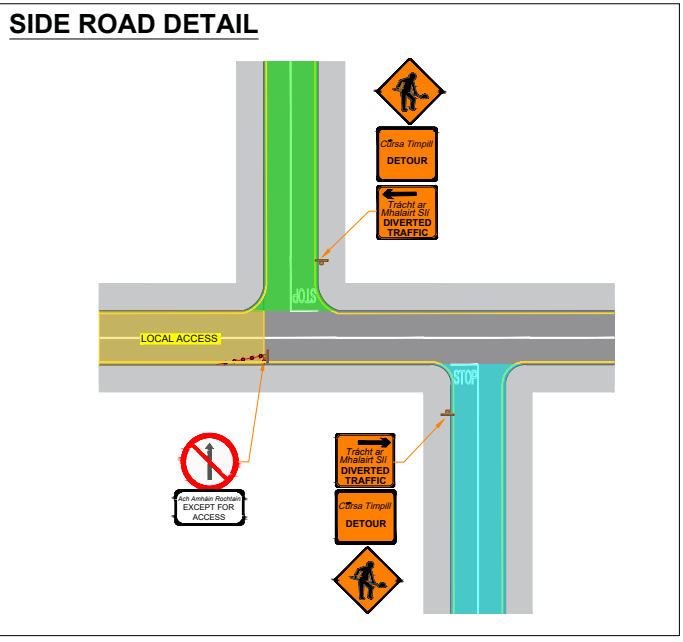
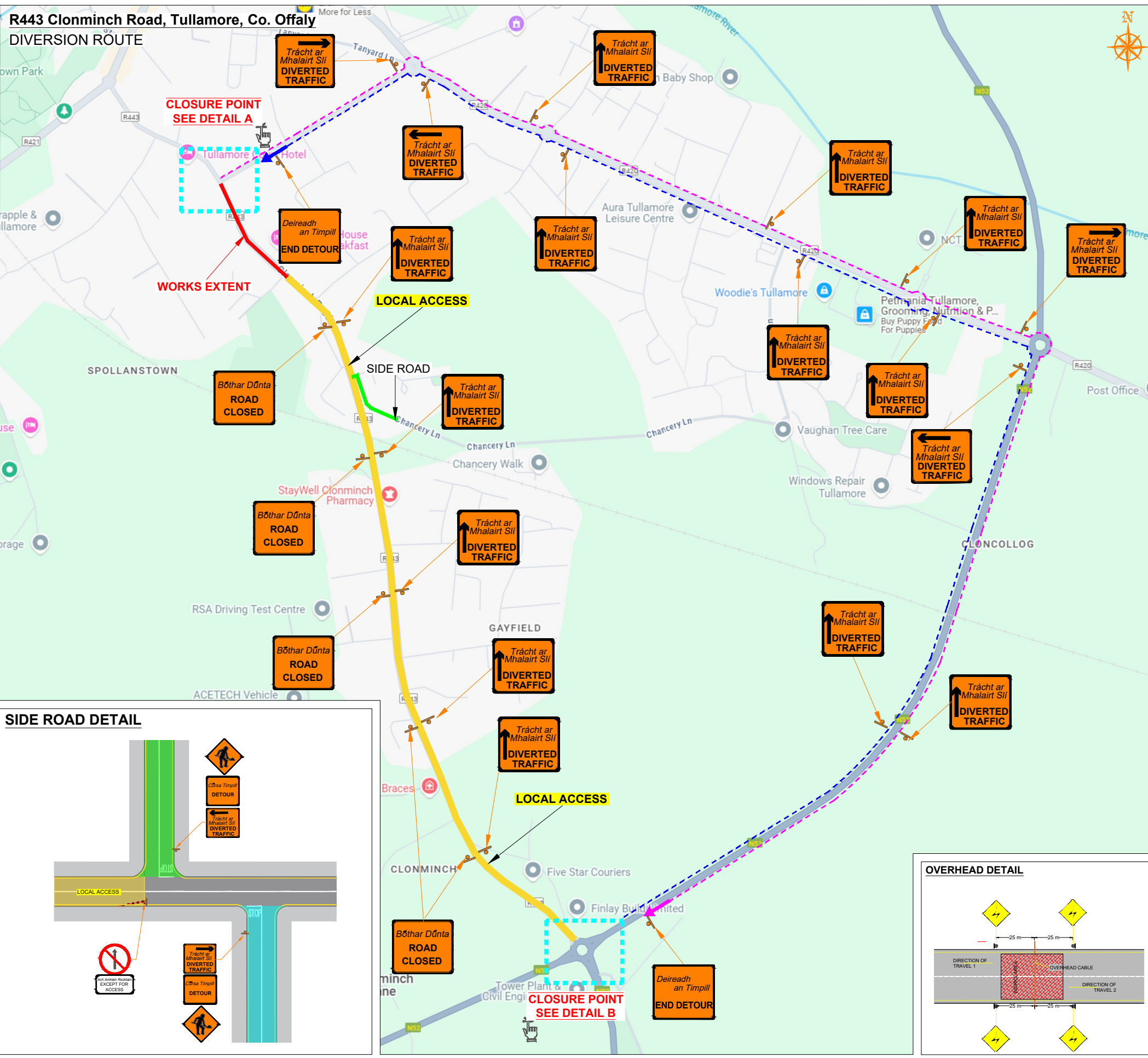


R443 Clonminch Road, Tullamore, Co. Offaly

DIVERSION ROUTE





ROAD CONTROL

Copyright Notes:
This drawing is the property of Road Control Services Ltd. The design information contained herein is strictly confidential. This document is not to be used, reproduced, disclosed or circulated in whole or in part without prior written consent.







CLIENT



ideas taking shape

DESIGN PARAMETERS	
Advance Warning Signage	
Sign size	600mm
Sign Visibility	50m
Number of Signs	2
Cumulative Distance	40m
Distance between Advance Warning Signs	20m
Taper	
Lane Taper Rate	N/A
Hard Shoulder Taper Rate	N/A

Speed Limit	50
Road Classification	Type B 1(iii) <12hours
Cones	
Cone Height	750mm
Taper Spacing	3m
Longitudinal Spacing	3m
Safety Zones	
Longitudinal	5m
Lateral	0.5m
Lanes	
Lane Width	3.0m

LEGEND	
	Works Area
	Traffic sign
	Traffic cones
	Diversion Route A
	Diversion Route B
	Local Access
	Pedestrian Barrier
	Pedestrian Route

GENERAL NOTES

1) All information contained in this drawing (including digital data) should be checked and verified prior to any stage of construction;
2) All works are to be carried out in accordance with local authority requirements and are to be included in the site-specific safety & health plan;
3) Site inspections and maintenance of the traffic management layout is to be agreed with local authority to ensure the safety and integrity of the design;
4) Contractor to carry out a site risk assessment prior to the installation of any traffic management plan to ensure that conditions reflect those considered for design post submission;
5) Contractor shall be responsible for the provision of ramp access at any change in road surface level where traffic runs on a temporary surface, and for pedestrian/cycle ramps where footpath/cycle-ways have a level discontinuity as per result of the works.

Rev	Date	Details	Drm	Chk	App	Drm	BC
						Chk	SD
						App	DH
						Date	09-07-2025
						Scale	NTS @A3
						Stage	CONSTRUCTION

Project		R443 Clonminch Road, Tullamore, Co. Offaly	
Title		TEMPORARY TRAFFIC MANAGEMENT PLAN DIVERSION ROUTE	
Drawing No		C25002_23_001	Rev 0