

General Tips for Drivers

- It is dangerous to assume that your car can handle all road conditions. Even the most kitted out four-wheel drive vehicles can encounter trouble on winter roads e.g. fording rivers and driving through flood waters
- Use your dipped headlights at all times so that others will see you
- In severe weather brake early and gently. It takes longer to stop a vehicle on wet, icy or snow covered roads so slow down and leave extra distance between you and the vehicle in front
- When temperatures drop watch out for "black ice." If the road looks polished or glossy it could be, "black ice" one of winter's worst hazards. Watch out for black ice, especially in sheltered / shaded areas on roads and under trees. It can take up to 10 times longer to stop on ice
- Check your owner's manual and find out if your vehicle has any safety assist technology like Electronic Stability Control (ESC) or Anti Lock Braking System (ABS). Know how they help your driving in severe weather conditions. But don't let these lull you into overestimating your vehicles ability to handle severe weather driving
- If another vehicle coming towards you seems to be out of control on snow or ice take care not to react suddenly, gentle braking is even more important in such conditions. Do not brake and steer at the same time

General Tips for Pedestrians, Cyclists and Motorcyclists

- Each winter slips and falls on ice or snow cause serious injuries. Be extremely careful
- Take extra care when walking near traffic or crossing the road in extreme weather conditions
- Visibility is reduced in severe weather conditions so wear high visibility clothing and carry a torch
- Wear clothing that does not restrict your hearing or vision

GENTLE REMINDER: CHECK ON YOUR ELDERLY RELATIVES AND NEIGHBOURS

- Phone them or call around
- Make sure they have enough fuel, food supplies and medications
- If in doubt call the Gardaí and ask them to check

You can get more information from:

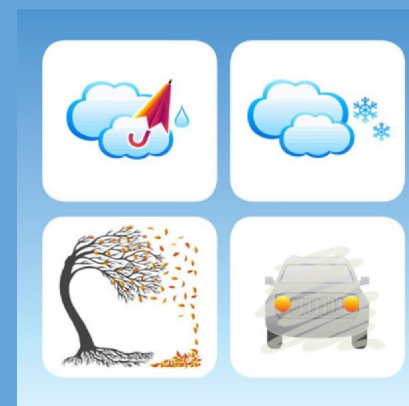
- www.rsa.ie
- www.emergencyplanning.ie
- www.winterready.ie
- www.met.ie
- www.tii.ie
- www.theaa.ie

BE WINTER-READY



Safe Driving

Practical Advice for Severe Weather



LoCall: 1890 252 736 or 0761 001 608
e-mail: oe@defence.ie



www.winterready.ie
[@emergencyIE](https://twitter.com/emergencyIE)



An Roinn Cosanta
Department of Defence
An Oifig um Pleanáil Eigeandála
Office of Emergency Planning



Údarás Um Shábháilteacht Ar Bhóithre
Road Safety Authority



DRIVING IN WINTER

Don't get caught out if severe weather strikes.

A few simple precautions can ensure the safety of you and your family on the roads this winter.

Bad weather such as torrential rain, severe winds, fog, freezing fog, ice and snow can strike suddenly catching road users off guard.

In extreme weather conditions you should ask yourself if making a journey by road is absolutely necessary. If it's not, consider delaying your trip until the weather and road conditions improve. This is especially important if you are a vulnerable road user such as a pedestrian, cyclist or motorcyclist.

If using the roads in such conditions is unavoidable— be prepared. Inform family/friends of your planned route, estimated time of arrival and carry a mobile phone. The golden rule is to drive, cycle or walk with care and caution and expect the unexpected.

However you should take heed of any warnings from the Emergency Services not to go out.

Is your Vehicle ready for Winter?

You should:

- service your vehicle so that it is safe for winter driving
- top up with anti-freeze and screen wash
- check for wear and tear on wiper blades and replace them as soon as they start to smear rather than clean windows
- keep tyre pressure at the manufacturer's recommended level and check you have at least 3 millimetres of tread depth
- make sure all vehicle lights are working and clean

In prolonged Severe Weather conditions (such as heavy snowfall) it is advisable to carry the following in the boot of the car:

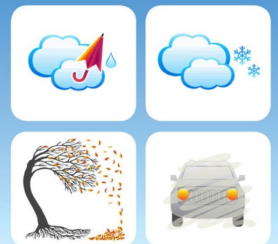
- High Visibility Vest (1 per seat is best)
- Wellington boots
- 2 hazard warning triangles (one for either side of a bend where necessary)
- De-icing equipment
- First aid kit
- A working torch
- A blanket
- Winter jacket and warm clothes
- A bottle of drinking water

BE PREPARED

Before setting off on a journey check if there are any problems on your route:

- Check local and National weather forecasts
- For updates on conditions on Motorways and National roads visit the [Transport Infrastructure Ireland website](#) and view their Traffic and Weather Information section
- For updates on the latest traffic news visit the [AA's website](#) or download their App
- Check for live weather, Local Authority and Garda updates as you travel – but remember not to use your phone while driving
- You can check your Local Authority website for updates on road closures and to view the 'Gritting' plan that is in your county when roads freeze
- It is vital that you heed any road safety warnings, or detours that have been put in place by the authorities

BE WINTER-READY



Be Winter Ready for Safe Driving