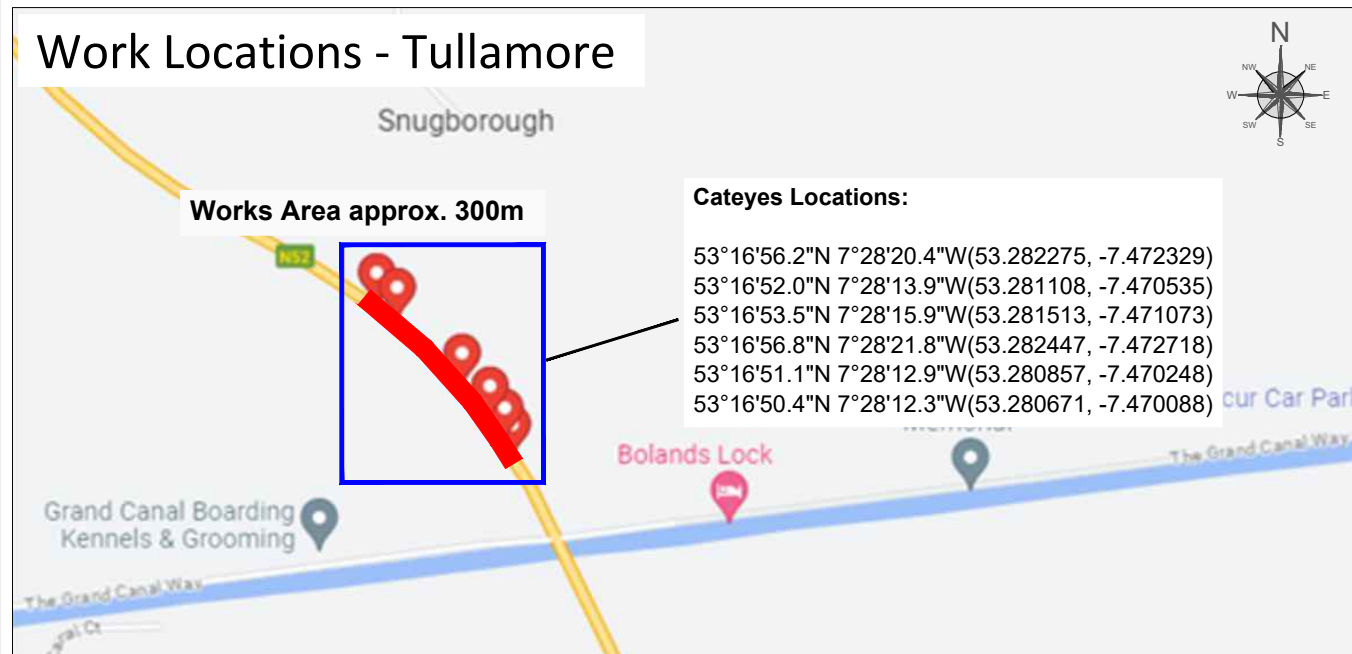


Work Locations - Tullamore



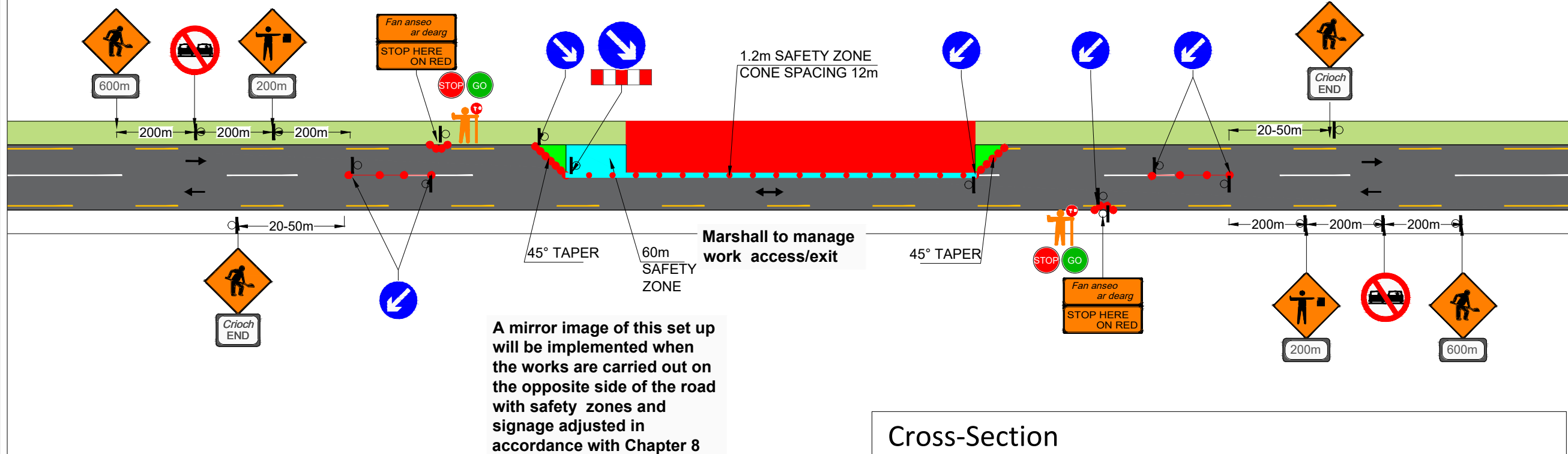
DESIGN PARAMETERS

Road Level	- 2 (ii)
Roadworks Type	- B
Speed Limit	- 100km/h
Sign Visibility	- 120m
Number of Signs	- 3
Cumulative Distance	- 600m
Distance between:	
advance signs (m)	- 200m
Taper at Lane	- 1 in 60
Taper at HS	- 1 in 30
Max. Cone Spacing:	
At Tapers	- 3m
Longitudinal	- 12m
Cone Height	- 1000mm
Max. Lamp Spacing:	
At Tapers	- 6m
Longitudinal	- 24m
Safety Zones:	
Longitudinal	- 60m
Lateral	- 1.2m
Min. Lane Width	- 3.0m
Sign Size	- 750mm

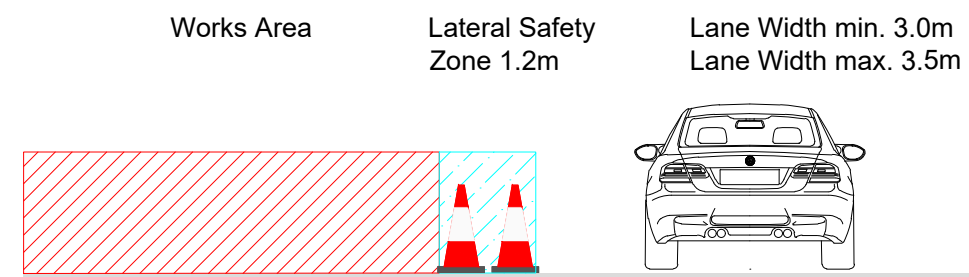
LEGEND:

WORKS AREA	
SAFETY ZONES	
TAPER	
CONES	
SIGN LOCATION	

PN4900-40-01 Mucklagh to Aghancarnan N52, Ring Road Tullamore MD - Stop and Go System



Cross-Section



NOTES:

1. All signs to be in accordance with Chapter 8 of TSM Guidance Document.
2. Signs to be placed so as not to cause obstruction to road users and pedestrians.
3. Safety Zones to be in accordance with Chapter 8 and maintained at all times.
4. An Garda Siochana to be notified prior to works commencing.
5. Any changes to TM Plan undertaken on site must be communicated and approved by PSCS and PSDP.

Client:

Healy & Sons
Civil Works

Project

Title:
Mucklagh to Aghancarnan N52
Ring Road Tullamore MD

Drawing

Title:
TRAFFIC MANAGEMENT PLAN
STOP AND GO SYSTEM

Design:

TS

Drawn:

MS

Drawing no.:

1

Scale:

A3 @ NTS

Date:

DATE : 26/06/2023

Checked:

EK

Approved:

EK

Project no.:

PN 4900-40

Revision:

0