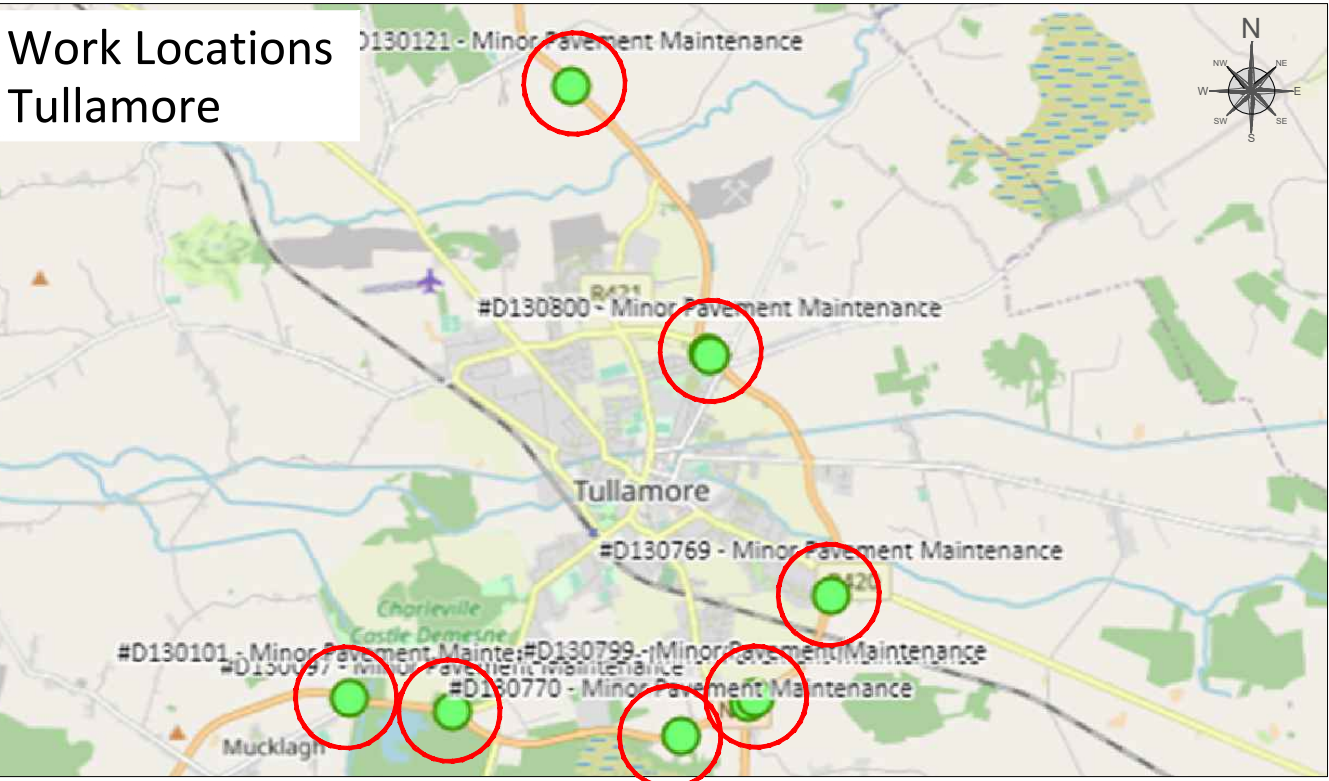
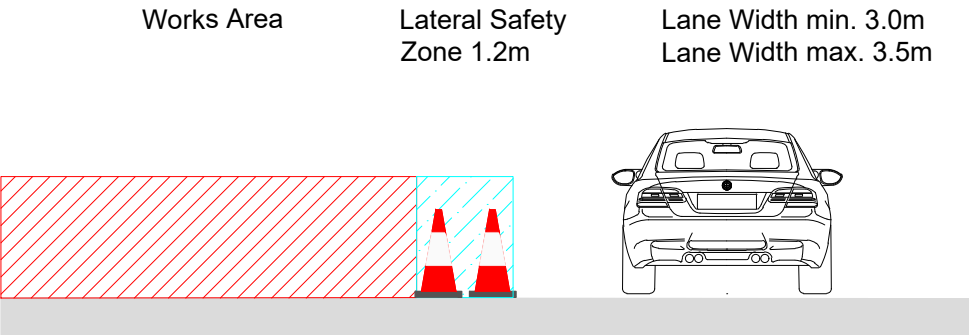


# Work Locations Tullamore



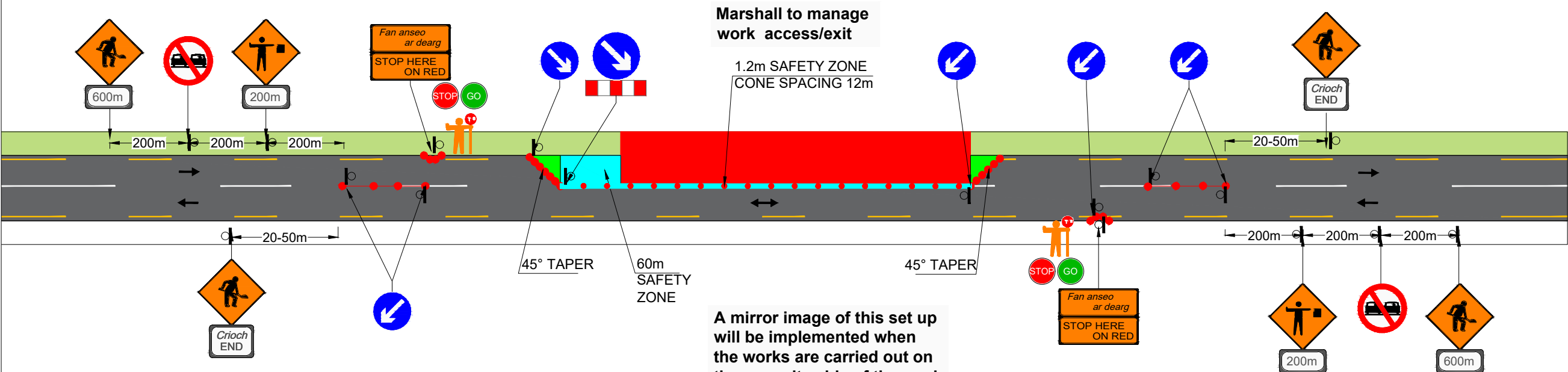
# Cross-Section



DESIGN PARAMETERS	
Road Level	- 2 (ii)
Roadworks Type	- B
Speed Limit	- 100km/h
Sign Visibility	- 120m
Number of Signs	- 3
Cumulative Distance	- 600m
Distance between:	
advance signs (m)	- 200m
Taper at Lane	- 1 in 60
Taper at HS	- 1 in 30
Max. Cone Spacing:	
At Tapers	- 3m
Longitudinal	- 12m
Cone Height	- 1000mm
Max. Lamp Spacing:	
At Tapers	- 6m
Longitudinal	- 24m
Safety Zones:	
Longitudinal	- 60m
Lateral	- 1.2m
Min. Lane Width	- 3.0m
Sign Size	- 750mm

LEGEND:	
	WORKS AREA
	SAFETY ZONES
	TAPER
	CONES
	SIGN LOCATION

# PN4900-40-02 Mucklagh to Aghancarnan N52, Ring Road Tullamore MD - Stop and Go System



- NOTES:**
1. All signs to be in accordance with Chapter 8 of TSM Guidance Document.
  2. Signs to be placed so as not to cause obstruction to road users and pedestrians.
  3. Safety Zones to be in accordance with Chapter 8 and maintained at all times.
  4. An Garda Siochana to be notified prior to works commencing.
  5. Any changes to TM Plan undertaken on site must be communicated and approved by PSCS and PSDP.

SIGN LOCATION PLACEMENT IS TO BE DECIDED BY THE ONSITE SUPERVISOR, AS TO DETERMINE THE LOCATION FOR THE BEST VISIBILITY AND HIGHEST AWARENESS

**Road Traffic Management Design and Planning**

W: [www.mtcdesign.ie](http://www.mtcdesign.ie) E: [info@mtcdesign.ie](mailto:info@mtcdesign.ie)

T: 085 141 4024 E: [mtcdesign@bt.ie](mailto:mtcdesign@bt.ie)

Roscrea, Co. Tipperary

Midlands EHS Solutions Ltd.

Consultancy & Training

Client:	
Healy & Sons Civil Works	
Project Title:	
Mucklagh to Aghancarnan N52 Ring Road Tullamore MD	
Drawing Title:	
TRAFFIC MANAGEMENT PLAN STOP AND GO SYSTEM	
Design:	Checked:
TS	EK
Drawn:	Approved:
MS	EK
Drawing no.:	Project no.:
2	PN 4900-40
Scale:	Revision:
A3 @ NTS	0
Date:	
DATE : 26/06/2023	